

Descendants of John Craig

Generation No. 1

1. JOHN¹ CRAIG (*WILLIAM^A, WILLIAM^B*) was born 1756 in Ballyroney, County Down, Ireland, and died 1830 in Fairview Twp., Butler Co, PA. He married ELIZABETH 'BETSY' ATKINSON, daughter of ATKINSON. She was born 1780 in Germany, and died 1886 in Fairview Twp., Butler Co., PA.

More About JOHN CRAIG:

E-Mail (Facts Pg) 2: Jun 26, 2002,

daleycraig@cs.com E-Mail (Facts Pg) 3: Jan 28,

2004, Shea Craig Immigration: Aug 02, 2002, NY

Web Page: Sep 19, 2001, Email



Children of JOHN CRAIG and ELIZABETH ATKINSON are:

2. i. SAMUEL² CRAIG, b. 1795, [Bef] Ireland; d. 1850, South Carolina.
ii. MARGARET CRAIG, b. 1797.
3. iii. GEORGE WASHINGTON CRAIG, b. Apr 06, 1798, Fairview Twp., Butler Co., PA; d. Dec 14, 1862, Armstrong Co., PA.
iv. MARY CRAIG, b. Abt. 1800.
v. ELIZABETH CRAIG, b. 1800.

2. SAMUEL² CRAIG (*JOHN¹, WILLIAM^A, WILLIAM^B*) was born 1795 in [Bef] Ireland, and died 1850 in South Carolina. He married ELIZABETH ANDERSON. She was born in Bef., and died 1850 in Bef..

More About

SAMUEL CRAIG:

Web Page: Nov

17, 2001, Email

Children of SAMUEL CRAIG and ELIZABETH ANDERSON are:

- i. ROBERT RANDALL³ CRAIG, b. South Carolina; d. Nov 18, 1854, Gilliam-Rook Cem., Maury Co., TN.
- ii. MARGARET CRAIG, b. Abt. 1804-1810; d. Mar 09, 1849, Maury Co., SC; m. THOMAS BALLARD, Jan 04, 1842.
- iii. MARY CRAIG, b. Born 1804-1810; d. 1842, Before; m. THOMAS BALLARD, Nov 13, 1837.
6. iv. JOHN CRAIG, ESQ, d. Jul 26, 1819, South Carolina.
v. SAMUEL CRAIG, JR.

3. GEORGE WASHINGTON² CRAIG (*JOHN¹, WILLIAM^A, WILLIAM^B*) was born Apr 06, 1798 in Fairview Twp., Butler Co., PA, and died Dec 14, 1862 in Armstrong Co., PA. He married MARY MAGDALEN CONRAD Jan 30, 1821, daughter of FREDERICK CONRAD and MARGARETHA ALLEMAN. She was born Aug 10, 1802 in Middletown, Dauphin Co., PA, and died Oct 02, 1887 in Armstrong Co., PA.

More About GEORGE

WASHINGTON CRAIG: Burial:

Tidal Cemetery, PA

Children of GEORGE CRAIG and MARY CONRAD are:

7. i. SAMUEL HENRY HARRISON³ CRAIG, b. Nov 01, 1821, Harmony, Butler Co., PA; d. Madison Township, Armstrong Co., PA.
8. ii. JOHN ATKINSON CRAIG, b. Aug 22, 1824, Harmony, Butler Co., Pa; d. 1893, Madison Twp., Armstrong Co., PA.
9. iii. JAMES ALEXANDER CRAIG, b. Jul 02, 1825, Beaver Co, PA; d. Feb 27, 1897, Kellersburg, Armstrong Co., PA.
10. iv. GEORGE WASHINGTON CRAIG, b. Oct 05, 1827; d. Oct 31, 1918.
v. ELIZABETH CRAIG, b. May 27, 1830, Harmony, Butler Co., PA; d. Oct 31, 1834.

4. vi. NANCY CRAIG, b. 1800, Abt..
5. vii. GEN. ALEXANDER CRAIG, b. 1807, Butler County, Donnegal Twp.; d. 1839, Butler County, Donnegal Twp..

Generation No. 2

- vi. THOMAS GRAY CRAIG, b. Aug 25, 1831; d. 1883; m. ANNA L CRISSMAN.
- vii. MARGARET ALLEMAN CRAIG, b. Feb 01, 1834, Madison Twp., Armstrong Co., PA; d. 1918, Madison Twp., Armstrong Co., PA; m. GEORGE W HINES, 1862.
- viii. N CRAIG, b. Feb 01, 1834; d. 1834.
- ix. WILLIAM H H CRAIG, b. Dec 31, 1836, Butler Co., PA; d. Sep 01, 1864, Andersonville Prison, Andersonville, GA; m. MARY JANE HENDERSON, 1861.
11. x. ALEXANDER TARLETON CRAIG, b. Jan 24, 1839; d. Jun 29, 1906.
 - xi. NANCY ANN CRAIG, b. Nov 26, 1841, Madison Township, Armstrong Co, PA; d. Aug 01, 1842, Armstrong Co., PA.
 - xii. MARY JANE CRAIG, b. Apr 07, 1844; d. 1883; m. JAMES FOX.

More About MARY JANE CRAIG:
Record Change: Nov 05, 2001

- xiii. NANCY ELIZABETH CRAIG, b. Feb 07, 1849, Madison Twp, Armstrong Co., PA; d. 1883; m. ROBERT FOX.

4. NANCY² CRAIG (*JOHN¹, WILLIAM^A, WILLIAM^B*) was born 1800 in Abt.. She married (1) MAJ. JAMES MOORHEAD, son of FERGUS MOORHEAD and JANE WHITE. He was born Abt. 1783.

Child of NANCY CRAIG is:

12. i. CRAIG³, b. Scotland.

5. GEN. ALEXANDER² CRAIG (*JOHN¹, WILLIAM^A, WILLIAM^B*) was born 1807 in Butler County, Donnegal Twp., and died 1839 in Butler County, Donnegal Twp.. He married (1) JANE MOORHEAD, daughter of SAMUEL MOORHEAD and AGNES CRAIG. She was born 1795. He married (2) SARAH UNKNOWN. She was born Abt. 1810, and died in Butler County, Donnegal Twp..

More About GEN. ALEXANDER CRAIG:

Estate Declaration: 1839, Image Located in Scrapbook Web Page:

Feb 22, 2002, Shirley Bartlett Concerning Will & Estate Will:

1839, Image Located in Scrapbook

Children of ALEXANDER CRAIG and SARAH UNKNOWN are:

- i. JOHN³ CRAIG.
- ii. THOMAS CRAIG.

Generation No. 3

6. JOHN³ CRAIG, ESQ (*SAMUEL², JOHN¹, WILLIAM^A, WILLIAM^B*) died Jul 26, 1819 in South Carolina. He married ELIZABETH 1750. She was born 1727, and died Oct 10, 1817 in South Carolina.

Child of JOHN CRAIG and ELIZABETH is:

- i. TEN CHILDREN⁴ CRAIG, b. Abt. 1755.

7. SAMUEL HENRY HARRISON³ CRAIG (*GEORGE WASHINGTON², JOHN¹, WILLIAM^A, WILLIAM^B*) was born Nov 01, 1821 in Harmony, Butler Co., PA, and died in Madison Township, Armstrong Co., PA. He married CATHERINE CASSIDY KING Oct 22, 1841. She was born Apr 18, 1816, and died Apr 25, 1895.

Children of SAMUEL CRAIG and CATHERINE KING are:

13. i. GEORGE WASHINGTON⁴ CRAIG, b. Nov 11, 1842; d. Aug 01, 1913.
14. ii. WILLIAM REED CRAIG, b. 1844; d. 1919.
15. iii. JOHN RAMSEY CRAIG, b. 1847, Indiana Co., PA; d. 1912, Armstrong Twp., Indiana Co., PA.
16. iv. JAMES E CRAIG, b. May 01, 1847; d. 1914, Madison, Armstrong, PA USA.
17. v. SARAH MILISSA CRAIG, b. 1849; d. 1920.
- vi. SARAH CRAIG, b. 1849.
- vii. MARY CRAIG, b. 1853; m. HENRY CRISSMAN; b. 1847; d. 1918.
- viii. THOMAS CRAIG, b. Feb 01, 1855; d. 1924.
18. ix. MARGARET CRAIG, b. 1857; d. 1892.
- x. HANNAH M CRAIG, b. Mar 16, 1864, Tidal area; d. Jan 22, 1929; m. PHILIP SMITH; b. Oct 15, 1867, Tidal or Widnoon area?;
d.
Feb 28, 1924.

8. JOHN ATKINSON³ CRAIG (*GEORGE WASHINGTON², JOHN¹, WILLIAM^A, WILLIAM^B*) was born Aug 22, 1824 in Harmony, Butler Co., Pa, and died 1893 in Madison Twp., Armstrong Co., PA. He married (1) MARTHA PRICILLA WOLF 1846. She was born 1826, and died 1912. He married (2) ELIZABETH CAMPBELL 1851, daughter of THOMAS CAMPBELL and MARGARET HILLARD. She was born 1826 in Butler Co., PA, and died 1888 in Madison Twp., Armstrong Co., PA.

More About JOHN ATKINSON CRAIG:

Web Page: Jan 06, 2002, Email from Shirley Bartlett

Children of JOHN CRAIG and MARTHA WOLF are:

- i. MARY E.⁴ CRAIG, b. Headstone - 1880 - 1881; d. 1881.
- ii. MARY ELIZABETH CRAIG, b. Mar 30, 1847; d. Apr 06, 1852.
- iii. JAMES WASHINGTON CRAIG, b. Jan 03, 1849; d. Sep 24, 1902; m. ELIZABETH J MCAULEY, 1872; b. 1845; d. 1898.

More About JAMES WASHINGTON CRAIG:

Web Page: Oct 26, 2001, Email

- iv. THOMAS WINFIELD CRAIG, b. May 15, 1851; d. Sep 22, 1873.
- 19.v. GEORGE ATKINSON CRAIG, b. Jul 30, 1853, Madison Twp., Armstrong Co., PA; d. Apr 05, 1890, Armstrong Twp., Indiana Co., buried
West Union - Parkwood, PA.
- vi. HARRIET MARIA CRAIG, b. Mar 07, 1858; m. JOHN HARVEY COLLINS, 1881; b. Mar 14, 1857.
- vii. WILLIAM WINFIELD CRAIG, b. Sep 20, 1876, Parkwood, Indiana Co., PA; d. Mar 05, 1897, Parkwood, PA.

More About WILLIAM WINFIELD CRAIG:

Burial: 1897, West Union UP Cemetery, Shelocta, Indiana Co., PA

9. JAMES ALEXANDER³ CRAIG (*GEORGE WASHINGTON², JOHN¹, WILLIAM^A, WILLIAM^B*) was born Jul 02, 1825 in Beaver Co, PA, and died Feb 27, 1897 in Kellersburg, Armstrong Co., PA. He married MARY CAMPBELL Mar 31, 1849, daughter of THOMAS CAMPBELL and MARGARET HILLARD. She was born 1828 in Parker Township, Butler Co., PA, and died Mar 27, 1895 in Kellersburg, Armstrong Co., PA.

Child of JAMES CRAIG and MARY CAMPBELL is:

20. i. MADISON STONER⁴ CRAIG, b. Apr 09, 1860, Shelocta, Indiana Co., PA; d. Jan 30, 1938, Shelocta, PA.

10. GEORGE WASHINGTON³ CRAIG (*GEORGE WASHINGTON², JOHN¹, WILLIAM^A, WILLIAM^B*) was born Oct 05, 1827, and died Oct 31, 1918. He married SARAH CAMPBELL. She was born 1830 in Butler Co., PA, and died 1905.

Children of GEORGE CRAIG and SARAH CAMPBELL are:

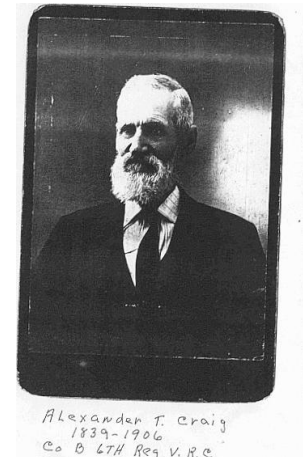
- i. KEZIAH J⁴ CRAIG.
- ii. GEORGE WASHINGTON CRAIG, JR., b. 1847; m. MARGARET JANE PAINE; b. Mar 27, 1847; d. Aug 28, 1916.
- iii. ANN CHRISTY CRAIG, b. 1851, Butler Co., PA; m. ROBERT KINZER; b. 1850, Abt. 1850.

- iv. KESIAH JANE CRAIG, b. 1853, PA; m. RICHARD STANFORD; b. 1855, PA.
- v. MARY M CRAIG, b. 1856, PA; m. SETH FENN; b. 1850, Abt. 1850.
- 21. vi. ROSS CRAIG, b. 1862, PA.
- 22. vii. THOMAS HARVEY CRAIG, b. 1864, Harmony, PA; d. 1947, Tidal, Armstrong Co., PA.
- viii. IDA CRAIG, b. 1867, PA; m. GEORGE P CAMPBELL; b. 1860, PA Abt 1860.
- 23. ix. MILTON C CRAIG, b. 1872, PA; d. 1935.
- x. SARAH EDITH CRAIG, b. 1865, PA.

11. ALEXANDER TARLETON³ CRAIG (*GEORGE WASHINGTON², JOHN¹, WILLIAM^A, WILLIAM^B*) was born Jan 24, 1839, and died Jun 29, 1906. He married MARY ELIZABETH METZGER. She was born 1839 in Germany, and died 1927 in Tidal Area.

Child of ALEXANDER CRAIG and MARY METZGER is:

- 24. i. THOMAS FREDRICK⁴ CRAIG, b. 1881; d. 1956.



12. CRAIG³ (*NANCY², JOHN¹, WILLIAM^A, WILLIAM^B*) was born in Scotland.

Child of CRAIG is:

- 25. i. NANCY JANE⁴ CRAIG, b. 1851.

Generation No. 4

13. GEORGE WASHINGTON⁴ CRAIG (*SAMUEL HENRY HARRISON³, GEORGE WASHINGTON², JOHN¹, WILLIAM^A, WILLIAM^B*) was born Nov 11, 1842, and died Aug 01, 1913. He married MARGARET JANE PAINE. She was born Mar 27, 1847, and died Aug 28, 1916.

Child of GEORGE CRAIG and MARGARET PAINE is:

- i. CHARLES CURTIS⁵ CRAIG, b. Sep 25, 1876; d. Hawkville, PA; m. MARY OLIVE HAWK, Jul 01, 1899; b. Mar 12, 1882, Hawkville, PA; d. Oct 30, 1950, Hawkville, PA.



14. WILLIAM REED⁴ CRAIG (*SAMUEL HENRY HARRISON³, GEORGE WASHINGTON², JOHN¹, WILLIAM^A, WILLIAM^B*) was born 1844, and died 1919.

Child of WILLIAM REED CRAIG is:

- i. CHILD N⁵ CRAIG, b. 1899; d. 1909.

15. JOHN RAMSEY⁴ CRAIG (*SAMUEL HENRY HARRISON³, GEORGE WASHINGTON², JOHN¹, WILLIAM^A, WILLIAM^B*) was born 1847 in Indiana Co., PA, and died 1912 in Armstrong Twp., Indiana Co., PA. He married NANCY ELLEN SHARP 1873, daughter of THOMAS SHARP and SARAH McNUTT. She was born 1847 in Indiana Co., PA, and died 1912 in Armstong Twp., Indiana Co., PA.

More About JOHN RAMSEY CRAIG:

Burial: 1912, West Union UP Cemetery, Shelocta, Indiana Co., PA

More About NANCY ELLEN SHARP:

Burial: West Union UP Cemetery, Shelocta, Indiana Co.,

PA Obituary: 1949

Children of JOHN CRAIG and NANCY SHARP are:

- i. SARAH BARBARA⁵ CRAIG, b. 1876; m. CHRISTIAN FEZER.

- ii. THOMAS GOLDEN CRAIG, b. 1880.
- 26. iii. HUGH MOTT CRAIG, b. 1883; d. 1933.
- 27. iv. FRANK CARROLL CRAIG, b. Jan 12, 1886; d. Sep 05, 1949.
- 28. v. SADIE CRAIG, b. 1876.

16. JAMES E⁴ CRAIG (*SAMUEL HENRY HARRISON³, GEORGE WASHINGTON², JOHN¹, WILLIAM^A, WILLIAM^B*) was born May 01, 1847, and died 1914 in Madison, Armstrong, PA USA. He married RACHEL STRASSER. She was born 1847, and died 1914 in Tidal, Armstrong, PA, USA.

More About JAMES E

CRAIG: Census: 1870,

Listed alone

Notes (Facts Pg): Oct 18, 2004, Marcy Kline

Children of JAMES CRAIG and RACHEL STRASSER are:

- i. CHARLES⁵ CRAIG, b. Abt. 1880.
- ii. LIZZIE CRAIG, b. Abt. 1883; d. 1961.
- iii. WALTER CRAIG, b. 1885; d. 1950.
- iv. MINNIE CATHERINE CRAIG, b. 1888; d. Jan 09, 1961, Kittanning, Armstrong, Co, PA.
- v. WILLIAM CRAIG, b. 1890.
- vi. ELLA CRAIG, b. 1894, Tidal, Armstrong, PA, USA; d. Abt. 1961, Tidal, Armstrong, PA, USA.
- vii. MARY CRAIG, b. Jun 13, 1896, Tidal, Armstrong, PA, USA; d. Oct 1982, Battle Creek, Calhoun, MI, USA.

17. SARAH MILISSA⁴ CRAIG (*SAMUEL HENRY HARRISON³, GEORGE WASHINGTON², JOHN¹, WILLIAM^A, WILLIAM^B*) was born 1849, and died 1920. She married (1) CECIL PAYNE. She married (2) JOHN PAYNE. He was born 1868, and died 1952.

Child of SARAH CRAIG and CECIL PAYNE is:

- i. BILL⁵ PAYNE, b. 1868; d. 1952.

18. MARGARET⁴ CRAIG (*SAMUEL HENRY HARRISON³, GEORGE WASHINGTON², JOHN¹, WILLIAM^A, WILLIAM^B*) was born 1857, and died 1892. She married JAMES HOPPER.

Child of MARGARET CRAIG and JAMES HOPPER is:

- i. LIZZIE J⁵ HOPPER, b. 1883; d. 1903.

19. GEORGE ATKINSON⁴ CRAIG (*JOHN ATKINSON³, GEORGE WASHINGTON², JOHN¹, WILLIAM^A, WILLIAM^B*) was born Jul 30, 1853 in Madison Twp., Armstrong Co., PA, and died Apr 05, 1890 in Armstrong Twp., Indiana Co., buried West Union - Parkwood, PA. He married (1) MARTHA PRICILLA WOLF. She was born 1826, and died 1912. He married (2) MARY JANE ANDERSON Dec 22, 1875, daughter of WILLIAM ANDERSON. She was born Feb 16, 1852 in Parkwood, PA, and died Apr 11, 1911 in Parkwood, PA.

More About GEORGE ATKINSON CRAIG:

Burial: Apr 05, 1890, West Union Cem, Parkwood, PA

More About MARY JANE ANDERSON:

Burial: 1911, West Union Cemetary, Armstrong Co., PA

Children of GEORGE CRAIG and MARTHA WOLF are:

- i. MARGARET PRISCILLA⁵ CRAIG, b. Feb 22, 1862; d. May 17, 1921; m. ROBERT LARRY HART, 1915.
- ii. SAMUEL CLEMENT CRAIG, b. Sep 21, 1855; m. SUSANAH J WYNKOOP, 1880.

Children of GEORGE CRAIG and MARY ANDERSON are:

29. iii. BESSIE BLANCHE⁵ CRAIG, b. Jul 21, 1882, Parkwood, Indiana Co., PA; d. Aug 31, 1955, Parkwood, PA.
iv. CYRUS LEROY CRAIG, b. Sep 1889, Parkwood, Indiana Co., PA; d. 1889.
v. CARRIE MANDUS CRAIG, b. Jul 12, 1880, Parkwood, Indiana Co., PA; d. Jun 11, 1881, Parkwood, Armstrong Twp, Indiana Co PA.
30. vi. JOHN EDGAR PEARLE CRAIG, b. May 18, 1878, Parkwood, Indiana Co., PA; d. Dec 20, 1934.
31. vii. TAYLOR WALTER CRAIG, b. Sep 24, 1884, Parkwood, Indiana Co., PA; d. Dec 12, 1952, Parkwood, PA.
viii. CIRUS LEROY CRAIG, b. Sep 01, 1889, Parkwood, PA; d. 1889, Parkwood, PA.
ix. INFANT TWINS CRAIG, b. Mar 07, 1888, Parkwood, PA; d. Mar 07, 1888, Parkwood, PA.

20. MADISON STONER⁴ CRAIG (*JAMES ALEXANDER³, GEORGE WASHINGTON², JOHN¹, WILLIAM^A, WILLIAM^B*) was born Apr 09, 1860 in Shelocta, Indiana Co., PA, and died Jan 30, 1938 in Shelocta, PA. He married CATHERINE ARNETTA 'NETTA' ANDERSON Nov 08, 1883, daughter of WILLIAM ANDERSON and CATHERINE RAY. She was born Jan 23, 1856 in Pennsylvania, and died Nov 04, 1925 in Shelocta, PA.



More About MADISON STONER CRAIG:

Notes (Facts Pg): Jun 25, 2002, The 18th Annual Craig Reunion Reunion News: Jul 20, 2002, Indiana, Westmoreland Co., PA

Children of MADISON CRAIG and CATHERINE ANDERSON are:

32. i. MARTIN BURTON⁵ CRAIG, b. Jan 10, 1885, Parkwood., Indiana Co., PA; d. Aug 16, 1966, Indiana, PA.
33. ii. BEATRICE IDELLE CRAIG, b. May 08, 1886, Shelocta, Indiana Co., PA; d. Oct 27, 1922, West Lebanon, Indiana Co., PA.
iii. LENA EDITH CRAIG, b. Jun 22, 1889, Parkwood, Indiana Co., PA; d. Jan 05, 1902, Parkwood, PA.

More About LENA EDITH CRAIG:

Cause of Death: fell from tree

34. iv. WILLIAM JOHN CRAIG, b. Aug 17, 1892, Parkwood, Indiana Co., PA; d. Aug 21, 1970, Indiana Co., Indiana PA.

21. ROSS⁴ CRAIG (*GEORGE WASHINGTON³, GEORGE WASHINGTON², JOHN¹, WILLIAM^A, WILLIAM^B*) was born 1862 in PA. He married ELIZA HARDEY.

Child of ROSS CRAIG and ELIZA HARDEY is:

35. i. ALFRED⁵ CRAIG, b. 1887, Rimerton, PA.

22. THOMAS HARVEY⁴ CRAIG (*GEORGE WASHINGTON³, GEORGE WASHINGTON², JOHN¹, WILLIAM^A, WILLIAM^B*) was born 1864 in Harmony, PA, and died 1947 in Tidal, Armstrong Co., PA. He married LUCINDA DUNCAN Nov 26, 1884, daughter of DAVID DUNCAN and NANCY WOLCOTT. She was born 1860 in Armstrong Co, PA (Abt 1860).

Children of THOMAS CRAIG and LUCINDA DUNCAN are:

- i. DAVID⁵ CRAIG, b. 1890, Abt 1890.
- ii. CARRIE CRAIG, b. 1890, Abt.
- iii. JANE CRAIG, b. 1890, PA Abt. 1890.

23. MILTON C⁴ CRAIG (*GEORGE WASHINGTON³, GEORGE WASHINGTON², JOHN¹, WILLIAM^A, WILLIAM^B*) was born 1872 in PA, and died 1935. He married CORA DAVIS. She was born in Tidal, PA.

Child of MILTON CRAIG and CORA DAVIS is:

- i. SARAH⁵ CRAIG, b. 1890, Abt 1890.

24. THOMAS FREDRICK⁴ CRAIG (*ALEXANDER TARLETON³, GEORGE WASHINGTON², JOHN¹, WILLIAM^A, WILLIAM^B*) was born 1881, and died 1956. He married URDIE MINICK.

Child of THOMAS CRAIG and URDIE MINICK is:

36. i. ALEXANDER LEWIS⁵ CRAIG, b. Feb 14, 1917.

25. NANCY JANE⁴ CRAIG (*CRAIG³, NANCY², JOHN¹, WILLIAM^A, WILLIAM^B*) was born 1851. She married PETER WALLACE.

Children of NANCY CRAIG and PETER WALLACE are:

37. i. REBECCA⁵ WALLACE.

38. ii. RACHEL WALLACE.

39. iii. JANE WALLACE.

iv. JAMES WALLACE.

Generation No. 5

26. HUGH MOTT⁵ CRAIG (*JOHN RAMSEY⁴, SAMUEL HENRY HARRISON³, GEORGE WASHINGTON², JOHN¹, WILLIAM^A, WILLIAM^B*) was born 1883, and died 1933. He married DORA AGNES BAILEY.

Children of HUGH CRAIG and DORA BAILEY are:

i. EARL FRANKLIN⁶ CRAIG, b. 1906.

ii. RUTH E. CRAIG, b. 1910; d. 1968.

iii. ETHEL L. CRAIG, b. 1912; m. CHARLES HIMES.

iv. PAUL NEWTON CRAIG, b. Apr 03, 1914.

v. HUGH MELVIN CRAIG, b. 1916.

vi. FLOYD BAILEY CRAIG, b. 1922.

vii. HELEN M. CRAIG, b. 1924.

27. FRANK CARROLL⁵ CRAIG (*JOHN RAMSEY⁴, SAMUEL HENRY HARRISON³, GEORGE WASHINGTON², JOHN¹, WILLIAM^A, WILLIAM^B*) was born Jan 12, 1886, and died Sep 05, 1949. He married BESSIE VERENA PETERMAN, daughter of JAMES PETERMAN and CLARA UNCAPHER. She was born 1886, and died 1949.

More About FRANK CARROLL CRAIG:

Burial: 1949, West Union UP Cemetery, Shelocta, Indiana Co.,

PA Obituary: 1949

More About BESSIE VERENA PETERMAN:

Burial: 1949, West Union UP Cemetery, Shelocta, Indiana Co., PA

Children of FRANK CRAIG and BESSIE PETERMAN are:

40. i. FLORENCE ANITA⁶ CRAIG, b. Mar 22, 1905; d. Aug 10, 1981, Indiana Co., Indiana PA.

ii. ALICE MARIE CRAIG, b. Jul 10, 1907; d. Dec 11, 1984.

iii. JOHN CARROLL CRAIG, b. Jul 16, 1909.

iv. EDWARD ARMSTRONG CRAIG, b. Mar 15, 1912; d. Dec 29, 1993.

v. CLARA JEANETTE CRAIG, b. Aug 12, 1914.

More About CLARA JEANETTE

CRAIG: Medical Information (Fact:

Died at 4 mo.

vi. GEORGE EMMERT CRAIG, b. Jun 01, 1916; d. Jun 15, 1934.

vii. HAZEL ELIZABETH CRAIG, b. Dec 19, 1918; d. Jun 01, 1969.

viii. HELEN LENORA CRAIG, b. Mar 04, 1922.

ix. DOROTHY MIDLRED CRAIG, b. Jul 24, 1924.

x. DANIEL NEAL CRAIG, b. Apr 03, 1929; d. Jan 22, 1976.

28. SADIE⁵ CRAIG (*JOHN RAMSEY⁴, SAMUEL HENRY HARRISON³, GEORGE WASHINGTON², JOHN¹, WILLIAM^A, WILLIAM^B*) was born 1876. She married CHRISTIAN FEZER.

Child of SADIE CRAIG and CHRISTIAN FEZER is:

i. BARBARA WILDA⁶ FEZER, b. 1917; m. CLYDE E. HALL.

29. BESSIE BLANCHE⁵ CRAIG (*GEORGE ATKINSON⁴, JOHN ATKINSON³, GEORGE WASHINGTON², JOHN¹, WILLIAM^A, WILLIAM^B*) was born Jul 21, 1882 in Parkwood, Indiana Co., PA, and died Aug 31, 1955 in Parkwood, PA. She married JOSEPH LINCOLN CAMPBELL Jun 01, 1911, son of WILLIAM CAMPBELL and MARGARET PATTERSON. He was born Feb 12, 1865 in Armstrong Twp., Indiana Co., PA, and died Sep 20, 1939 in Armstrong Twp, Indiana Co., PA.

More About JOSEPH LINCOLN CAMPBELL:

Burial: 1939, Oakland Cemetery, White Twp., Indiana Co.,

PA Member: 1st United Presbyterian Church Occupation:

Farmer

Child of BESSIE CRAIG and JOSEPH CAMPBELL is:

i. MARGARET WINONA⁶ CAMPBELL, b. Sep 29, 1915; d. Jun 20, 1950.

30. JOHN EDGAR PEARLE⁵ CRAIG (*GEORGE ATKINSON⁴, JOHN ATKINSON³, GEORGE WASHINGTON², JOHN¹, WILLIAM^A, WILLIAM^B*) was born May 18, 1878 in Parkwood, Indiana Co., PA, and died Dec 20, 1934. He married ANNIE SHIREY Dec 30, 1903. She was born Nov 12, 1879, and died Feb 02, 1964.

Child of JOHN CRAIG and ANNIE SHIREY is:

41. i. JOHN ROBERT⁶ CRAIG.

31. TAYLOR WALTER⁵ CRAIG (*GEORGE ATKINSON⁴, JOHN ATKINSON³, GEORGE WASHINGTON², JOHN¹, WILLIAM^A, WILLIAM^B*) was born Sep 24, 1884 in Parkwood, Indiana Co., PA, and died Dec 12, 1952 in Parkwood, PA. He married (1) MARY ELIZABETH MILLEN May 24, 1911. She was born Jun 01, 1888 in Parkwood, Armstrong Twp, Indiana Co PA, and died Aug 30, 1941 in Parkwood, PA.

More About TAYLOR WALTER CRAIG:

Burial: 1952, West Union Cemetery,

PA Web Page: Apr 02, 2002, Jim Craig

More About MARY ELIZABETH MILLEN:

Burial: 1941, West Union Cemetery,

PA

Children of TAYLOR CRAIG and MARY MILLEN are:

i. DICK⁶ CRAIG.

ii. HARRY CRAIG.

iii. ALVIN CRAIG, m. ANN CHAMBERS.

iv. JOHN CRAIG.

v. WALDO CRAIG.

42. vi. RUSSELL CRAIG.

vii. RUBY RHEA CRAIG.

viii. ANNABEL SHAFFER CRAIG.

ix. DOROTHY COLEMAN CRAIG.

Children of TAYLOR WALTER CRAIG are:

43. x. HELEN RUBY⁶ CRAIG.
xi. GEORGE DICKIE CRAIG, b. Mar 12, 1912, Parkwood, Indiana Co., PA; d. Jun 26, 1982, Indiana Hospital, Indiana, PA, buried Oakland Cemetary, Indiana, PA.
44.xii. HARRY EUGENE CRAIG, b. Oct 16, 1913, Parkwood, Indiana Co., PA; d. May 19, 1982, Indiana, PA, buried Greenwood Cemetary, Indiana, PA.
xiii. ANNABELLE CRAIG, b. Apr 02, 1917, Parkwood, Indiana Co., PA; d. Jan 14, 1965, Creekside, PA, buried Greenwood Cemetary, Indiana Co., PA.

32. MARTIN BURTON⁵ CRAIG (*MADISON STONER⁴, JAMES ALEXANDER³, GEORGE WASHINGTON², JOHN¹, WILLIAM^A, WILLIAM^B*) was born Jan 10, 1885 in Parkwood., Indiana Co., PA, and died Aug 16, 1966 in Indiana, PA. He married MARGARET MYRTILLA HOLSTEIN Sep 20, 1905 in Parkwood, PA, daughter of ROBERT HOLSTEIN and MARTHA COULTER. She was born Aug 04, 1883 in Young Twp., Indiana Co., PA, and died Jun 06, 1969 in Cameron's Scenery Hill home, Indiana, PA.



More About MARTIN BURTON CRAIG:

A Craig Family URL 3: Jun 12, 2002,

http://www.ancestry.com/today/main.htm?opt=cp&ATT=vZDoSsM6xkYcLxRHGnSdeE*CvPgKK

QBAZeHUAE Burial: 1966, Oakland Cemetery, Indiana, PA Notes (Facts Pg): Mar 30, 2002,

Story of Merle and his dad, MB Craig Web Page: Jun 12, 2002,

<http://www.tribalpages.com/tribes/rbchopper>

More About MARGARET MYRTILLA

HOLSTEIN: Burial: 1969, Oakland

Cemetary, Indiana, PA

Children of MARTIN CRAIG and MARGARET HOLSTEIN are:

45. i. EDNA MARIE⁶ CRAIG, b. Apr 27, 1906, Parkwood, Indiana Co., PA; d. May 04, 2005, Aiken, South Carolina.
ii. CLARENCE MERLE CRAIG, b. Feb 20, 1908, Parkwood, PA; d. Jul 15, 1995, Indiana, PA; m. MARGARET ROSE MANNERS, Sep 19, 1931, Parkwood, PA; b. Jul 04, 1911, Indiana, PA; d. Feb 13, 2003, Indiana Co., PA.

More About CLARENCE MERLE CRAIG:

Burial: 1995, Oakland Cemetery, Indiana, PA

Notes (Facts Pg): Mar 30, 2002, R&P Coal Co & Merle Craig

More About MARGARET ROSE MANNERS:

Burial: Feb 18, 2003, Oakland Cemetery, Indiana Co., PA

46. iii. ROBERT LEROY CRAIG, b. May 28, 1910, Parkwood, Indiana Co., PA; d. Dec 26, 1968, Indiana, PA.
47. iv. MADISON ARTHUR CRAIG, b. Aug 20, 1912, Parkwood, PA; d. Mar 31, 2005, Andrew's Village, Indiana, PA.
48. v. PAUL CLIFFORD CRAIG, b. Aug 02, 1914, PA; d. May 02, 1969, Indiana, PA.
49. vi. DELMAR PRESTON CRAIG, b. May 25, 1916, PA; d. Jul 14, 1984, Brookfield, Ohio.
50. vii. WILLIAM TYRUS CRAIG, b. Apr 13, 1918, PA; d. May 13, 1985, Mercer, PA.
51. viii. CATHERINE HAZEL B CRAIG, b. Jun 22, 1920, Parkwood, PA.
ix. HERBERT GLENN CRAIG, b. Apr 08, 1922, Parkwood, Indiana Co., PA; d. Jul 22, 1981, Riverside, CA.

More About HERBERT GLENN CRAIG:

Burial: 1981, U.S. National Cemetery, Riverside, CA

52. x. SAMUEL WARD CRAIG, b. Feb 24, 1925, Parkwood, PA.
53. xi. FLORENCE RUTH CRAIG, b. Sep 23, 1928.



33. BEATRICE IDELLE⁵ CRAIG (*MADISON STONER⁴, JAMES ALEXANDER³, GEORGE WASHINGTON², JOHN¹, WILLIAM^A, WILLIAM^B*) was born May 08, 1886 in Shelocta, Indiana Co., PA, and died Oct 27, 1922 in West Lebanon, Indiana Co., PA. She married SAMUEL JOHNSTON HOLSTEIN Jun 28, 1911, son of ROBERT HOLSTEIN and MARTHA COULTER. He was born

Nov 07, 1879 in West Lebanon, Indiana County, Pennsylvania, and died Jul 30, 1954 in West Lebanon, Indiana County, Pennsylvania.

More About BEATRICE IDELLE CRAIG:

Burial: Oct 1922, West Union Cemetary,
PA

More About SAMUEL JOHNSTON HOLSTEIN: Burial:

West Lebanon Cemetery, West Lebanon, PA

Children of BEATRICE CRAIG and SAMUEL HOLSTEIN are:

54. i. LILLIAN ADELAIDE⁶ HOLSTEIN, b. Jan 24, 1912, Erie, PA.
ii. LENA MARTHA HOLSTEIN, b. May 27, 1914; d. Sep 01, 1914, Shelocta, PA.

More About LENA MARTHA
HOLSTEIN: Web Page: Oct 03, 2001,
Email

34. WILLIAM JOHN⁵ CRAIG (*MADISON STONER⁴, JAMES ALEXANDER³, GEORGE WASHINGTON², JOHN¹, WILLIAM^A, WILLIAM^B*) was born Aug 17, 1892 in Parkwood, Indiana Co., PA, and died Aug 21, 1970 in Indiana Co., Indiana PA. He married FLORENCE CAROLYN WILSON Sep 01, 1920, daughter of ALEXANDER DARWIN WILSON. She was born Feb 01, 1899 in Apollo, PA, and died Dec 20, 1977 in Indiana Co., Indiana PA.

More About WILLIAM JOHN CRAIG:

Burial: Greenwood Cemetery, Indiana,
PA

More About FLORENCE CAROLYN

WILSON: Burial: Greenwood Cemetery,
Indiana, PA

Child of WILLIAM CRAIG and FLORENCE WILSON is:

55. i. MAX THEODORE⁶ CRAIG, b. Jan 13, 1933, Shelocta, PA.



35. ALFRED⁵ CRAIG (*ROSS⁴, GEORGE WASHINGTON³, GEORGE WASHINGTON², JOHN¹, WILLIAM^A, WILLIAM^B*) was born 1887 in Rimerton, PA. He married ORPHA ROOFNER CRAIG. She was born in Rimerton, PA.

Child of ALFRED CRAIG and ORPHA ROOFNER CRAIG is:

- i. DANIEL ROSS⁶ CRAIG, b. Rimerton, PA.

36. ALEXANDER LEWIS⁵ CRAIG (*THOMAS FREDRICK⁴, ALEXANDER TARLETON³, GEORGE WASHINGTON², JOHN¹, WILLIAM^A, WILLIAM^B*) was born Feb 14, 1917. He married (1) HAZEL SWARTZ. He married (2) ANN V. CRAIG. She was born 1921, and died Nov 30, 1999.

Child of ALEXANDER CRAIG and HAZEL SWARTZ is:

- i. SONDRRA MAWNEE⁶ CRAIG, b. Nov 06, 1940; m. DAVID HUFFMAN, JR; b. May 28, 1938.

More About DAVID HUFFMAN, JR:
Web Page: Oct 27, 2001, Email

37. REBECCA⁵ WALLACE (*NANCY JANE⁴ CRAIG, CRAIG³, NANCY², JOHN¹, WILLIAM^A, WILLIAM^B*)

Children of REBECCA WALLACE are:

- i. CLAR⁶ KNOTT.
- ii. SARAH KNOTT.

38. RACHEL⁵ WALLACE (*NANCY JANE⁴ CRAIG, CRAIG³, NANCY², JOHN¹, WILLIAM^A, WILLIAM^B*) She married JOHN CUNNINGHAM.

Children of RACHEL WALLACE and JOHN CUNNINGHAM are:

- i. MISS. MARY⁶ CUNNINGHAM.
56. ii. REV. WILLIAM CUNNINGHAM.
- iii. DAVIS CUNNINGHAM.

39. JANE⁵ WALLACE (*NANCY JANE⁴ CRAIG, CRAIG³, NANCY², JOHN¹, WILLIAM^A, WILLIAM^B*) She married MILTON GUTHERIE.

Child of JANE WALLACE and MILTON GUTHERIE is:

- i. SPER⁶ GUTHERIE, m. MARTHA DONALDSON.

Generation No. 6

40. FLORENCE ANITA⁶ CRAIG (*FRANK CARROLL⁵, JOHN RAMSEY⁴, SAMUEL HENRY HARRISON³, GEORGE WASHINGTON², JOHN¹, WILLIAM^A, WILLIAM^B*) was born Mar 22, 1905, and died Aug 10, 1981 in Indiana Co., Indiana PA. She married PAUL ALEXANDER CAMPBELL Dec 21, 1921, son of JAMES CAMPBELL and SARAH REED. He was born May 28, 1894, and died Mar 06, 1956 in Indiana Co., Indiana PA.

More About PAUL ALEXANDER CAMPBELL:

Burial: 1956, Oakland Cemetery, White Twp., Indiana Co., PA

Children of FLORENCE CRAIG and PAUL CAMPBELL are:

- i. ALEXANDER CARLISLE⁷ CAMPBELL, b. Sep 18, 1923; m. ANNIE LENTZ.
- ii. JAMES BLAIR CAMPBELL, b. Sep 01, 1925; d. Feb 22, 1945, WW 2.

More About JAMES BLAIR CAMPBELL:

Burial: 1945, Oakland Cemetery, White Twp., Indiana Co., PA

Military service: 1945, WW II

57. iii. THELMA LOUISE CAMPBELL, b. Apr 05, 1928, Penn Runn, Indiana Co., PA.

58. iv. MARTHA IRENE CAMPBELL, b. Jun 08, 1930.

41. JOHN ROBERT⁶ CRAIG (*JOHN EDGAR PEARLE⁵, GEORGE ATKINSON⁴, JOHN ATKINSON³, GEORGE WASHINGTON², JOHN¹, WILLIAM^A, WILLIAM^B*)

Child of JOHN ROBERT CRAIG is:

- i. SHEY⁷ CRAIG.

42. RUSSELL⁶ CRAIG (*TAYLOR WALTER⁵, GEORGE ATKINSON⁴, JOHN ATKINSON³, GEORGE WASHINGTON², JOHN¹, WILLIAM^A, WILLIAM^B*)

Child of RUSSELL CRAIG is:
i. DEVONA⁷ CRAIG.

43. HELEN RUBY⁶ CRAIG (*TAYLOR WALTER⁵, GEORGE ATKINSON⁴, JOHN ATKINSON³, GEORGE WASHINGTON², JOHN¹, WILLIAM^A, WILLIAM^B*) She married WALLACE LYTTLE RHEA.

Child of HELEN CRAIG and WALLACE RHEA is:
i. LIVING⁷ RHEA.

44. HARRY EUGENE⁶ CRAIG (*TAYLOR WALTER⁵, GEORGE ATKINSON⁴, JOHN ATKINSON³, GEORGE WASHINGTON², JOHN¹, WILLIAM^A, WILLIAM^B*) was born Oct 16, 1913 in Parkwood, Indiana Co., PA, and died May 19, 1982 in Indiana, PA, buried Greenwood Cemetary, Indiana, PA.

Child of HARRY EUGENE CRAIG is:
i. CAROL ANN⁷ CRAIG, b. Mar 19, 1942; d. Mar 20, 1942.

45. EDNA MARIE⁶ CRAIG (*MARTIN BURTON⁵, MADISON STONER⁴, JAMES ALEXANDER³, GEORGE WASHINGTON², JOHN¹, WILLIAM^A, WILLIAM^B*) was born Apr 27, 1906 in Parkwood, Indiana Co., PA, and died May 04, 2005 in Aiken, South Carolina. She married EUGENE IRA BARCLAY Nov 06, 1929. He was born Dec 19, 1905 in Apollo, PA, and died Nov 14, 1983 in Apollo, PA.

More About EDNA MARIE CRAIG:
Notes (Facts Pg): Mar 19, 2002, One of Three Sisters

More About EUGENE IRA BARCLAY:
Burial: 1983, Greenwood Memorial Park, Lower Burrell, PA

Child of EDNA CRAIG and EUGENE BARCLAY is:
59. i. RICHARD EDWIN⁷ BARCLAY, b. Apr 23, 1932, Apollo, PA.



46. ROBERT LEROY⁶ CRAIG (*MARTIN BURTON⁵, MADISON STONER⁴, JAMES ALEXANDER³, GEORGE WASHINGTON², JOHN¹, WILLIAM^A, WILLIAM^B*) was born May 28, 1910 in Parkwood, Indiana Co., PA, and died Dec 26, 1968 in Indiana, PA. He married HANNAH JEMIMA FLEMING Jun 22, 1933 in Parsonage of Rev. W. C. Work, Bolivar, PA, daughter of HARRY FLEMING and MADGE HOLMES. She was born Aug 13, 1913 in Clymer, PA, and died Jul 21, 1982 in Indiana, PA.

More About ROBERT LEROY CRAIG:
Burial: Dec 29, 1968, Garden of Devotions, Indiana, PA
Web Page: Mar 30, 2002, URL= http://www.lib.iup.edu/spec_coll/articles/old_time_mining.html

More About [HANNAH JEMIMA FLEMING](#):

Burial: Jul 24, 1982, Greenwood Cemetery, Indiana, PA Medical
Information (Fact: Jul 21, 1982, Cause of Death - Auto Accident Notes
(Facts Pg): Jun 22, 1933, Wedding Announcement

Marriage Notes for ROBERT CRAIG and HANNAH FLEMING:
June 1933 ~ Indiana Evening Gaz. Image stored at FTM Online

Wedding announcement: Craig-Fleming: A very delightful wedding took place thursday, June 22, when Robert LeRoy Craig, son of Mr and Mrs Bert Craig, of Parkwood, and Miss Hannah J. Fleming, were united in marriage by Rev. W. C. Work at the

parsonage in Bolivar. Mrs. Craig is a well-known and popular young woman in her community. Mr. Craig is a graduate of Elders Ridge Vocational School, and at present is employed at McIntire (Coal Mines). A reception at the bride's home followed the wedding. Saturday evening a wedding dinner and reception was held at the groom's home. Mr. And Mrs. Merle Craig, of Islin; Mr. and Mrs. Eugene Barclay, of Avonmore, and Mr and Mrs. Blair Fleming, of Clymer, were the out-of-town guests. Immediately after the dinner the newly-weds were treated to a rousing serenade by a hundred or more guests. Mr. and Mrs Craig will soon be at home to their many friends in the Thos. Campbell house on Parkwood Road. Congratulations and good wishes are extended the bride and groom for many years of wedded happiness.

Image of original announcement and reception at:

<http://familytreemaker.genealogy.com/users/c/r/a/Robert-bCraig/PHOTO/0196photo.html>

<http://familytreemaker.genealogy.com/users/c/r/a/Robert-b-Craig/PHOTO/0197photo.html>

Children of ROBERT CRAIG and HANNAH FLEMING are:

60. i. REV ROBERT BLAIR⁷ CRAIG, b. Dec 14, 1937, Kent/Jacksonville, Indiana Co., PA.
61. ii. KENNETH MERLE CRAIG, b. Sep 26, 1942, Indiana, PA.

47. MADISON ARTHUR⁶ CRAIG (*MARTIN BURTON⁵, MADISON STONER⁴, JAMES ALEXANDER³, GEORGE WASHINGTON², JOHN¹, WILLIAM^A, WILLIAM^B*) was born Aug 20, 1912 in Parkwood, PA, and died Mar 31, 2005 in Andrew's Village, Indiana, PA. He married ANNA MARTHA MILLEN Apr 14, 1937 in Parkwood, PA, daughter of ROBERT MILLEN and MARY CALHOUN. She was born Oct 19, 1917 in PA, and died Jun 16, 1998 in Indiana, PA.



More About MADISON ARTHUR CRAIG:

Notes (Facts Pg): Aug 29, 2002, Dr. Anderson Visits Art Craig

More About ANNA MARTHA MILLEN:

Burial: Greenwood Cemetery, Indiana, PA

Children of MADISON CRAIG and ANNA MILLEN are:

62. i. ARTHUR GERALD⁷ CRAIG, b. Apr 10, 1938, PA.
63. ii. JAMES CARLYLE CRAIG, b. Sep 20, 1939, PA.
64. iii. GLADYS KATHRIN CRAIG, b. Jul 01, 1943.
65. iv. RALPH EUGENE CRAIG, b. May 13, 1949.



48. PAUL CLIFFORD⁶ CRAIG (*MARTIN BURTON⁵, MADISON STONER⁴, JAMES ALEXANDER³, GEORGE WASHINGTON², JOHN¹, WILLIAM^A, WILLIAM^B*) was born Aug 02, 1914 in PA, and died May 02, 1969 in Indiana, PA. He married HELEN ELIZABETH CHAMBERS Aug 04, 1938 in Parkwood, PA. She was born Dec 21, 1919 in PA, and died Dec 15, 1999 in Indiana, PA.

More About PAUL CLIFFORD CRAIG:

Burial: 1969,
Greenwood
Cemetery, Indiana,
PA Web Page: Mar

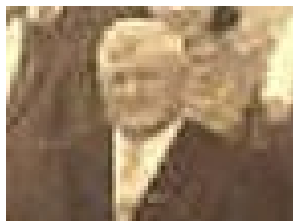
03, 2002, Susan Clark Craig

More About HELEN ELIZABETH CHAMBERS:

Burial: 1999, Greenwood Cemetery, Indiana, PA

Children of PAUL CRAIG and HELEN CHAMBERS are:

- 66. i. CAROL JEAN⁷ CRAIG, b. Sep 08, 1942, PA.
- 67. ii. CLIFFORD DEAN CRAIG, b. Sep 08, 1942, PA; d. Mar 26, 1994, PA.
- 68. iii. ELEANOR LOUISE CRAIG, b. Jul 25, 1939, Indiana Co., PA.



49. DELMAR PRESTON⁶ CRAIG (*MARTIN BURTON⁵, MADISON STONER⁴, JAMES ALEXANDER³, GEORGE WASHINGTON², JOHN¹, WILLIAM^A, WILLIAM^B*) was born May 25, 1916 in PA, and died Jul 14, 1984 in Brookfield, Ohio. He married (2) BETTY JANE BOWMAN Jan 17, 1940. She was born May 24, 1922.

More About DELMAR PRESTON CRAIG:

Burial: 1984,
Brookfield
Cemetery,

Brookfield, OH Fact 1: Private

Child of DELMAR PRESTON CRAIG is:

- 69. i. DELMAR PRESTON⁷ CRAIG, JR., b. Sep 16, 1946; d. Dec 03, 1981, Ohio.

Children of DELMAR CRAIG and BETTY BOWMAN are:

- 70. ii. MARTIN LEROY⁷ CRAIG, b. Jun 05, 1941, Pa; d. Jan 12, 2001, Brookfield, Ohio.
- 71. iii. KAREN SUZANNE CRAIG, b. Feb 25, 1951; d. Sep 09, 1994, Brookfield, OH.

50. WILLIAM TYRUS⁶ CRAIG (*MARTIN BURTON⁵, MADISON STONER⁴, JAMES ALEXANDER³, GEORGE WASHINGTON², JOHN¹, WILLIAM^A, WILLIAM^B*) was born Apr 13, 1918 in PA, and died May 13, 1985 in Mercer, PA. He married FRANCES MAGDALENE SPOHN Apr 02, 1941. She was born Apr 27, 1922 in PA.

More About WILLIAM TYRUS CRAIG:

Burial: 1985, Mount Washington Cemetery, Mercer, PA

Children of WILLIAM CRAIG and FRANCES SPOHN are:

- 72. i. SHELBY JEAN⁷ CRAIG, b. May 21, 1942, PA.
- 73. ii. WILLIAM DALE CRAIG, b. Mar 09, 1944, PA.
- 74. iii. JOSEPH GLENN CRAIG, b. Aug 09, 1951, Transfer, PA.



51. CATHERINE HAZEL B⁶ CRAIG (*MARTIN BURTON⁵, MADISON STONER⁴, JAMES ALEXANDER³, GEORGE WASHINGTON², JOHN¹, WILLIAM^A, WILLIAM^B*) was born Jun 22, 1920 in Parkwood, PA. She married JOHN CLAIR RHEA Aug 15, 1940. He was born Sep 18, 1919, and died Nov 08, 1999 in Phoenix, AR.

More About JOHN CLAIR RHEA:

Burial: 1999, Greenwood Cemetery, Indiana,
PA Notes (Facts Pg): Aug 22, 2002, Bob Craig



Children of CATHERINE CRAIG and JOHN RHEA are:

- 75. i. EDWARD CLAIR⁷ RHEA, b. Feb 16, 1941.
- 76. ii. MARGARET PATRICIA RHEA, b. Oct 04, 1942.
- 77. iii. THEODORE CRAIG RHEA, b. Jan 18, 1955.



52. SAMUEL WARD⁶ CRAIG (*MARTIN BURTON⁵, MADISON STONER⁴, JAMES ALEXANDER³, GEORGE WASHINGTON², JOHN¹, WILLIAM^A, WILLIAM^B*) was born Feb 24, 1925 in Parkwood, PA. He married HELEN ELIZABETH

SCHIMMOLLER Aug 20, 1949. She was born Aug 24, 1927.

More About SAMUEL WARD CRAIG:

E-Mail (Facts Pg) 2: Jul 16, 2003, Unable to attend

More About HELEN ELIZABETH SCHIMMOLLER:

Children of SAMUEL CRAIG and HELEN SCHIMMOLLER are:

- 78. i. CAROLYN ANN⁷ CRAIG, b. Sep 28, 1952.
- 79. ii. COLLEEN ELIZABETH CRAIG, b. Nov 14, 1955.

53. FLORENCE RUTH⁶ CRAIG (*MARTIN BURTON⁵, MADISON STONER⁴, JAMES ALEXANDER³, GEORGE WASHINGTON², JOHN¹, WILLIAM[^], WILLIAM^{^B}*) was born Sep 23, 1928. She married THOMAS MICHAEL REDINGER Sep 12, 1947. He was born Jun 10, 1924.



Children of FLORENCE CRAIG and THOMAS REDINGER are:

- i. THOMAS MARTIN⁷ REDINGER, b. Jul 08, 1949; d. Nov 14, 1984, Shelocta, PA.

More About THOMAS MARTIN REDINGER:

Burial: West Union Cemetery, Parkwood Road, Shelocta, PA

Cause of Death: Auto Accident

- ii. KAREN DIANNE REDINGER, b. Sep 24, 1950.
- 80. iii. GARY LYNN REDINGER, b. May 09, 1951.
- 81. iv. DARLINE FRANCES BOGUS, b. Jul 10, 1953.
- v. DONALD PAUL REDINGER, b. Jun 03, 1954; d. Jun 30, 1954.

More About DONALD PAUL REDINGER:

Burial: 1954, West Union Cemetery, Parkwood Road, Shelocta, PA

54. LILLIAN ADELAIDE⁶ HOLSTEIN (*BEATRICE IDELLE⁵ CRAIG, MADISON STONER⁴, JAMES ALEXANDER³, GEORGE WASHINGTON², JOHN¹, WILLIAM[^], WILLIAM^{^B}*) was born Jan 24, 1912 in Erie, PA. She married THOMAS HOWARD SHEARER Nov 06, 1929, son of THOMAS RALSTON SHEARER. He was born Jul 19, 1910 in Olivet, Armstrong Co., Pennsylvania, and died May 29, 1971 in Cougan House Twp., Lycoming, Pennsylvania.

More About THOMAS HOWARD SHEARER: Burial:

Elders Ridge Cemetery, Elders Ridge, PA Fact 1:

Social Security #: 190-03-0118 Fact 2: Issued in:

Pennsylvania

Children of LILLIAN HOLSTEIN and THOMAS SHEARER are:

- 82. i. BETTE LUCILLE⁷ SHEARER, b. Feb 15, 1930.
- 83. ii. ROBERT LELAND SHEARER, b. May 30, 1932.
- 84. iii. PATRICIA LARUE SHEARER, b. Aug 14, 1937.

55. MAX THEODORE⁶ CRAIG (*WILLIAM JOHN⁵, MADISON STONER⁴, JAMES ALEXANDER³, GEORGE WASHINGTON², JOHN¹, WILLIAM[^], WILLIAM^{^B}*) was born Jan 13, 1933 in Shelocta, PA. He married JANE ELEANOR COLLINS Jul 15, 1954. She was born Nov 01, 1933.

Children of MAX CRAIG and JANE COLLINS are:

- 85. i. BRADLY LAINE⁷ CRAIG, b. Jun 17, 1955.

- 86. ii. RANDY MAX CRAIG, b. Jul 09, 1957.
- 87. iii. DOUGLAS CHRIS CRAIG, b. Mar 10, 1963.

56. REV. WILLIAM⁶ CUNNINGHAM (*RACHEL⁵ WALLACE, NANCY JANE⁴ CRAIG, CRAIG³, NANCY², JOHN¹, WILLIAM^A, WILLIAM^B*)

Children of REV. WILLIAM CUNNINGHAM are:

- i. J.J.⁷ CUNNINGHAM.
- ii. WILLIAM CUNNINGHAM.
- iii. JESSIE CUNNINGHAM.
- iv. DAVID CUNNINGHAM.
- v. UNKNOWN CUNNINGHAM.

Generation No. 7

57. THELMA LOUISE⁷ CAMPBELL (*FLORENCE ANITA⁶ CRAIG, FRANK CARROLL⁵, JOHN RAMSEY⁴, SAMUEL HENRY HARRISON³, GEORGE WASHINGTON², JOHN¹, WILLIAM^A, WILLIAM^B*) was born Apr 05, 1928 in Penn Runn, Indiana Co., PA. She married PAUL MARTIN MENTCH Sep 02, 1950 in Shelocta, PA, son of CLYDE MENTCH and LOLA MARTIN. He was born Feb 28, 1923 in Shelocta, Armstrong Twp., Indiana Co., PA.

More About PAUL MARTIN MENTCH:

Occupation: Indiana Univ. Of PA, Indiana, PA

Children of THELMA CAMPBELL and PAUL MENTCH are:

- 88. i. NANCY LOUISE⁸ MENTCH, b. Jan 31, 1952, Indiana Co., Indiana PA.
- 89. ii. JAMES PAUL MENTCH, b. Jan 23, 1953, Indiana Co., Indiana PA.

58. MARTHA IRENE⁷ CAMPBELL (*FLORENCE ANITA⁶ CRAIG, FRANK CARROLL⁵, JOHN RAMSEY⁴, SAMUEL HENRY HARRISON³, GEORGE WASHINGTON², JOHN¹, WILLIAM^A, WILLIAM^B*) was born Jun 08, 1930. She married (1) RUSSELL HAWK, son of ADAM HAWK and MARTHA CAMPBELL. She married (2) ADAM HAWK.

Child of MARTHA CAMPBELL and RUSSELL HAWK is:

- 90. i. JAMES⁸ HAWK, b. Dec 05, 1953, Indiana Co., Indiana PA.

Child of MARTHA CAMPBELL and ADAM HAWK is:

- 91. ii. RUSSELL⁸ HAWK.

59. RICHARD EDWIN⁷ BARCLAY (*EDNA MARIE⁶ CRAIG, MARTIN BURTON⁵, MADISON STONER⁴, JAMES ALEXANDER³, GEORGE WASHINGTON², JOHN¹, WILLIAM^A, WILLIAM^B*) was born Apr 23, 1932 in Apollo, PA. He married (1) ELEANOR MADELINE OBRIOT Aug 27, 1955 in Indiana County, PA. She was born Nov 26, 1932 in SC/PA. He married (2) Jo ANNE HARVEY Apr 23, 1983. She was born Apr 05, 1959 in Hermine, PA.

Children of RICHARD BARCLAY and ELEANOR OBRIOT are:

- 92. i. MARK STEPHEN⁸ BARCLAY, b. Oct 09, 1957, Hermine, PA.
- 93. ii. PAMELA SUE BARCLAY, b. Apr 21, 1960.
- 94. iii. DOUGLAS SCOTT BARCLAY, b. May 03, 1962, Aiken, SC.

60. ROBERT BLAIR⁷ CRAIG (*ROBERT LEROY⁶, MARTIN BURTON⁵, MADISON STONER⁴, JAMES ALEXANDER³, GEORGE WASHINGTON², JOHN¹, WILLIAM^A, WILLIAM^B*) was born Dec 14, 1937 in Kent/Jacksonville, Indiana Co., PA. He married GLENDA ANN CARRAWAY

Oct 17, 1959 in Victory Blvd. Baptist Church, Portsmouth, VA, daughter of IRVIN CARRAWAY and KATHLEEN CARRAWAY. She was born Mar 21, 1942 in Washington, Leggetts Cross Road, NC

More About GLENDA ANN CARRAWAY:

Medical Information: 1995 Tripple By-Pass Heart Surgery

Notes (Facts Pg): Jun 09, 2004, Remembering Glenda

Children of ROBERT CRAIG and GLENDA CARRAWAY are:

95. i. JEFFREY KENNETH⁸ CRAIG, b. Jul 18, 1960, Indiana Hospital, White Twp., Indiana Co., Indiana, PA.
96. ii. ROGER TRENT CRAIG, b. Nov 20, 1962, Indiana Hospital, White Twp, Indiana Co., Indiana, PA.

61. KENNETH MERLE⁷ CRAIG (*ROBERT LEROY⁶, MARTIN BURTON⁵, MADISON STONER⁴, JAMES ALEXANDER³, GEORGE WASHINGTON², JOHN¹, WILLIAM^A, WILLIAM^B*) was born Sep 26, 1942 in Indiana, PA. He married MYRNA ELLEN CHURCHILL Jun 30, 1962. She was born Mar 26, 1943 in Marion Center, PA.

More About MYRNA ELLEN CHURCHILL:

Web Page: Dec 25, 2001, Email

Children of KENNETH CRAIG and MYRNA CHURCHILL are:

97. i. KENNA MARIE⁸ CRAIG, b. Jan 23, 1963, Indiana, PA.
98. ii. BEVERLY DIANE CRAIG, b. May 19, 1964, Indiana, PA.
- iii. ANGELA BREYANN CRAIG, b. Oct 30, 1978, Indiana, PA.

62. ARTHUR GERALD⁷ CRAIG (*MADISON ARTHUR⁶, MARTIN BURTON⁵, MADISON STONER⁴, JAMES ALEXANDER³, GEORGE WASHINGTON², JOHN¹, WILLIAM^A, WILLIAM^B*) was born Apr 10, 1938 in PA. He married PATRICIA CLAIRE FETTERMAN Oct 16, 1959. She was born Apr 12, 1941.

Children of ARTHUR CRAIG and PATRICIA FETTERMAN are:

99. i. DAVID EARL⁸ CRAIG, b. Feb 26, 1961, PA.
100. ii. SANDRA KAY CRAIG, b. May 04, 1962.

63. JAMES CARLYLE⁷ CRAIG (*MADISON ARTHUR⁶, MARTIN BURTON⁵, MADISON STONER⁴, JAMES ALEXANDER³, GEORGE WASHINGTON², JOHN¹, WILLIAM^A, WILLIAM^B*) was born Sep 20, 1939 in PA. He married SARAH ESTHER OVERDORFF Jun 02, 1962. She was born Aug 25, 1940.

More About JAMES CARLYLE

CRAIG: Web Page: Sep 28, 2001,

Email

Children of JAMES CRAIG and SARAH OVERDORFF are:

101. i. BARRY JAMES⁸ CRAIG, b. Mar 25, 1963.
102. ii. ERIC SCOTT CRAIG, b. Apr 11, 1966.
- iii. KEVIN MICHAEL CRAIG, b. Jun 19, 1969.

64. GLADYS KATHRIN⁷ CRAIG (*MADISON ARTHUR⁶, MARTIN BURTON⁵, MADISON STONER⁴, JAMES ALEXANDER³, GEORGE WASHINGTON², JOHN¹, WILLIAM^A, WILLIAM^B*) was born Jul 01, 1943. She married (1) RONALD JOSEPH ADAMSON, son of HOWARD ADAMSON and GLADYS CRAIG. He was born Feb 18, 1965. She married (2) HOWARD JOSEPH ADAMSON Jun 01, 1963. He was born Aug 21, 1942.

Child of GLADYS CRAIG and RONALD ADAMSON is:

- i. KATHERINE YVONNE⁸ ADAMSON.

Children of GLADYS CRAIG and HOWARD ADAMSON are:

103. ii. RONALD JOSEPH⁸ ADAMSON, b. Feb 18, 1965.
iii. BRIAN CRAIG ADAMSON, b. Mar 09, 1967.

65. RALPH EUGENE⁷ CRAIG (*MADISON ARTHUR⁶, MARTIN BURTON⁵, MADISON STONER⁴, JAMES ALEXANDER³, GEORGE WASHINGTON², JOHN¹, WILLIAM^A, WILLIAM^B*) was born May 13, 1949. He married PATRICIA ANN LEVITZ Jan 12, 1971. She was born May 23, 1951.

Child of RALPH CRAIG and PATRICIA LEVITZ is:

- i. LISA MARIE⁸ CRAIG, b. Mar 01, 1980.

66. CAROL JEAN⁷ CRAIG (*PAUL CLIFFORD⁶, MARTIN BURTON⁵, MADISON STONER⁴, JAMES ALEXANDER³, GEORGE WASHINGTON², JOHN¹, WILLIAM^A, WILLIAM^B*) was born Sep 08, 1942 in PA. She married JOHN HARRY BISHOP Sep 08, 1963. He was born Jun 20, 1940.

More About JOHN HARRY BISHOP:

Divorced: 1999

Children of CAROL CRAIG and JOHN BISHOP are:

104. i. BRYON PAUL⁸ BISHOP, SR., b. Dec 31, 1966, PA.
ii. JOHNS DAVID BISHOP, b. May 03, 1978, PA.

67. CLIFFORD DEAN⁷ CRAIG (*PAUL CLIFFORD⁶, MARTIN BURTON⁵, MADISON STONER⁴, JAMES ALEXANDER³, GEORGE WASHINGTON², JOHN¹, WILLIAM^A, WILLIAM^B*) was born Sep 08, 1942 in PA, and died Mar 26, 1994 in PA. He married (1) SUSAN JANE CLARK Sep 14, 1963, daughter of JUDGE EDWIN M. CLARK. She was born Aug 17, 1944. He married (2) JOANN LAMEY Jan 26, 1984. She was born May 17, 1952.

More About CLIFFORD DEAN CRAIG:

Notes (Facts Pg): Posthumous

Honor

More About SUSAN JANE CLARK:

Degree: May 11, 2002, Penn State University

Web Page: Oct 01, 2001, Ancestry

Children of CLIFFORD CRAIG and SUSAN CLARK are:

105. i. TODD MARTIN⁸ CRAIG, b. Jun 06, 1964.
106. ii. ROBIN SUE CRAIG, b. Jul 31, 1965.
107. iii. JULIE ELIZABETH CRAIG, b. Mar 12, 1972.
iv. MATTHEW CLARK CRAIG, b. Feb 19, 1978; m. JILL OWENS, Jun 26, 2003, Balleymena, County Antrim, Northern Ireland; b. Abt. 1979, Balleymena, County Antrim, Northern Ireland.

More About MATTHEW CLARK CRAIG:

Notes (Facts Pg): Aug 09, 2003, Marriage Information

More About JILL OWENS:

Web Page: Aug 08, 2003, Wedding Pictures on Matthew's Data

- v. CHAD MICHAEL CRAIG, b. Dec 29, 1979.

Children of CLIFFORD CRAIG and JOANN LAMEY are:

- vi. CAROL IRENE⁸ ARCHTUORA, b. Aug 27, 1972.
vii. CHARLES LYNN ARCHTUORA, b. Aug 20, 1973, Adopted; m. CRYSTAL AUTUMN RENEE MADDEN, Jan 13, 1996.

68. ELEANOR LOUISE⁷ CRAIG (*PAUL CLIFFORD⁶, MARTIN BURTON⁵, MADISON STONER⁴, JAMES ALEXANDER³, GEORGE WASHINGTON², JOHN¹, WILLIAM^A, WILLIAM^B*) was born Jul 25, 1939 in Indiana Co., PA. She married HAROLD GEORGE BEHM Sep 27, 1958. He was born Oct 20, 1936.

Children of ELEANOR CRAIG and HAROLD BEHM are:

- i. VALERE JEAN⁸ BEHM, b. Jul 18, 1961; m. RANDALL MARK SPOTTS, Apr 25, 1992; b. Jan 14, 1958.
- ii. BRADLEY MICHAEL BEHM, b. Jan 28, 1983; d. Feb 22, 1984, Indiana, PA.
- iii. DARIN LEE BEHM, b. Jan 25, 1985.
- iv. JUSTIN SCOTT BEHM, b. Jul 14, 1986.
- v. HAROLD BRADLEY BEHM, b. Jul 21, 1959; m. RITA CHRISTINE LUNDSTROM, Jun 06, 1981; b. Dec 05, 1961.

69. DELMAR PRESTON⁷ CRAIG, JR. (*DELMAR PRESTON⁶, MARTIN BURTON⁵, MADISON STONER⁴, JAMES ALEXANDER³, GEORGE WASHINGTON², JOHN¹, WILLIAM^A, WILLIAM^B*) was born Sep 16, 1946, and died Dec 03, 1981 in Ohio. He married DIANNE KAY SHUPE Oct 19, 1974. She was born Aug 08, 1955.

More About DELMAR PRESTON CRAIG, JR.:

Burial: 1981, Brookfield Cemetery, Brookfield, OH

Children of DELMAR CRAIG and DIANNE SHUPE are:

- i. TINA MARIE⁸ CRAIG, b. Jan 30, 1976; m. J. SCOTT DUNCAN II, Oct 06, 2001.

More About TINA MARIE CRAIG:

Notes (Facts Pg): Jul 23, 2002, Reunion Change

- ii. ROXANNE KAY CRAIG, b. Jul 17, 1980.

70. MARTIN LEROY⁷ CRAIG (*DELMAR PRESTON⁶, MARTIN BURTON⁵, MADISON STONER⁴, JAMES ALEXANDER³, GEORGE WASHINGTON², JOHN¹, WILLIAM^A, WILLIAM^B*) was born Jun 05, 1941 in Pa, and died Jan 12, 2001 in Brookfield, Ohio. He married (1) KATHY LEE MCGAUGHEY May 05, 1962. She was born Jul 02, 1941. He married (2) SYLVIA MAE AYRES Aug 10, 1970. She was born Sep 20, 1934.

Child of MARTIN CRAIG and SYLVIA AYRES is:

108. i. MICHELLE LEE⁸ CRAIG, b. Sep 30, 1972.

71. KAREN SUZANNE⁷ CRAIG (*DELMAR PRESTON⁶, MARTIN BURTON⁵, MADISON STONER⁴, JAMES ALEXANDER³, GEORGE WASHINGTON², JOHN¹, WILLIAM^A, WILLIAM^B*) was born Feb 25, 1951, and died Sep 09, 1994 in Brookfield, OH.

More About KAREN SUZANNE CRAIG:

Burial: 1994, Brookfield Cemetery, Brookfield, OH

Child of KAREN SUZANNE CRAIG is:

- i. DOUGLAS PAUL⁸ CRAIG, b. Sep 18, 1978.

72. SHELBY JEAN⁷ CRAIG (*WILLIAM TYRUS⁶, MARTIN BURTON⁵, MADISON STONER⁴, JAMES ALEXANDER³, GEORGE WASHINGTON², JOHN¹, WILLIAM^A, WILLIAM^B*) was born May 21, 1942 in PA. She married (1) RAYMOND JAMES BLAIR Aug 20, 1960. He was born Nov 30, 1939. She married (2) MELVIN RICHARD WILSON Nov 11, 1978. He was born Jun 19, 1942, and died Mar 19, 1991 in Mercer, PA.

More About MELVIN RICHARD WILSON:

Burial: Mount Washington Cemetery, Mercer, PA

Child of **SHELBY CRAIG** and **RAYMOND BLAIR** is:

109. i. **DANIEL LEE⁸ BLAIR**, b. May 14, 1961.

73. WILLIAM DALE⁷ CRAIG (*WILLIAM TYRUS⁶, MARTIN BURTON⁵, MADISON STONER⁴, JAMES ALEXANDER³, GEORGE WASHINGTON², JOHN¹, WILLIAM^A, WILLIAM^B*) was born Mar 09, 1944 in PA. He married **JANIE JOAN VIGUS** Aug 07, 1965. She was born Feb 03, 1949.

Children of **WILLIAM CRAIG** and **JANIE VIGUS** are:

i. **LORI ANN⁸ CRAIG**, b. Aug 04, 1966; m. **OTTO WOODS**, Jan 12, 1989; b. Thornton, OH.

ii. **STEVEN LEE CRAIG**, b. Sep 14, 1970, Thornton, OH.

iii. **LYNNE AJOR CRAIG**, b. Sep 13, 1985.

74. JOSEPH GLENN⁷ CRAIG (*WILLIAM TYRUS⁶, MARTIN BURTON⁵, MADISON STONER⁴, JAMES ALEXANDER³, GEORGE WASHINGTON², JOHN¹, WILLIAM^A, WILLIAM^B*) was born Aug 09, 1951 in Transfer, PA. He married (1) **SHIRLEY N N CRAIG**. He married (2) **CAROLE MELINDA REDMOND** Jun 02, 1970. She was born Jun 03, 1951. He married (3) **HEIDI ELLEN MARTIN** Dec 31, 1975. She was born Jun 19, 1954. He married (4) **ARLENE WOODYARD** Oct 31, 1982. She was born May 02, 1956.

Child of **JOSEPH CRAIG** and **CAROLE REDMOND** is:

i. **JOSEPH GLENN⁸ CRAIG, JR.**, b. Sep 17, 1971.

75. EDWARD CLAIR⁷ RHEA (*CATHERINE HAZEL B⁶ CRAIG, MARTIN BURTON⁵, MADISON STONER⁴, JAMES ALEXANDER³, GEORGE WASHINGTON², JOHN¹, WILLIAM^A, WILLIAM^B*) was born Feb 16, 1941. He married **SANDRA JEAN BARR** Jun 23, 1962, daughter of **ELZIE BARR** and **ELLEN UTBERGH**. She was born Feb 03, 1942.

More About **EDWARD CLAIR RHEA**:

Web Page: Aug 18, 2002, Bill

More About **SANDRA JEAN BARR**:

Web Page: Jun 25, 2002, Barr Slope, PA

Child of **EDWARD RHEA** and **SANDRA BARR** is:

110. i. **HEATHER LYNN⁸ RHEA**, b. Jun 26, 1969.

76. MARGARET PATRICIA⁷ RHEA (*CATHERINE HAZEL B⁶ CRAIG, MARTIN BURTON⁵, MADISON STONER⁴, JAMES ALEXANDER³, GEORGE WASHINGTON², JOHN¹, WILLIAM^A, WILLIAM^B*) was born Oct 04, 1942. She married **MARTIN GEORGE PALMER** Dec 09, 1961. He was born Sep 19, 1937 in Punxsutawney, PA.

Children of **MARGARET RHEA** and **MARTIN PALMER** are:

i. **MARTIN JOHN⁸ PALMER**, b. Apr 17, 1966, Punxsutawney, PA; m. **DONNA MARIE GROMLEY**, Jun 23, 2001; b. Oct 29, 1977, PA.

ii. **RANDON SCOTT PALMER**, b. Aug 03, 1967, Punxsutawney, PA; m. **CONNIE SUE LAMBERT**, Mar 19, 1990; b. Jan 17, 1970, Punxsutawney, PA.

111. iii. **SHAWN PATRICK PALMER**, b. Jan 07, 1975, Punxsutawney, PA.

iv. **CORIE DARE PALMER**, b. Nov 28, 1976, Punxsutawney, PA.

77. THEODORE CRAIG⁷ RHEA (*CATHERINE HAZEL B⁶ CRAIG, MARTIN BURTON⁵, MADISON STONER⁴, JAMES ALEXANDER³, GEORGE WASHINGTON², JOHN¹, WILLIAM^A, WILLIAM^B*) was born Jan 18, 1955. He married **ALICE JEAN FISCUS** Apr 14, 1979. She was born Aug 08, 1960 in Corsica, PA.

Children of **THEODORE RHEA** and **ALICE FISCUS** are:

i. **TAMARA SHANNON⁸ RHEA**, b. Sep 26, 1981; d. Aug 07, 1991, Oil City, PA.

More About TAMARA SHANNON RHEA:
Burial: Brandon Cemetery, Cranberry, PA

ii. AMBER DEANNE RHEA, b. Apr 24, 1983, Corsica, PA.

78. CAROLYN ANN⁷ CRAIG (*SAMUEL WARD⁶, MARTIN BURTON⁵, MADISON STONER⁴, JAMES ALEXANDER³, GEORGE WASHINGTON², JOHN¹, WILLIAM^A, WILLIAM^B*) was born Sep 28, 1952. She married RONALD OTIS SACKETT Apr 29, 1972. He was born Mar 23, 1948.

More About CAROLYN ANN CRAIG:
Notes (Facts Pg): Dec 28, 2002, Christmas
News Reunion News: 2003, Annual Reunion
Minutes

More About RONALD OTIS SACKETT:
Notes (Facts Pg): Dec 28, 2002, Christmas News

Children of CAROLYN CRAIG and RONALD SACKETT are:

i. ERIC OTIS⁸ SACKETT, b. Aug 05, 1974; m. BETH ANN LOCKMEYER, May 23, 1998; b. Oct 28, 1975.

More About ERIC OTIS SACKETT:
Notes (Facts Pg): Dec 2004, Mi

ii. ELIZABETH LYNANN SACKETT, b. Aug 25, 1976; m. MIKE SCHUST, Jul 08, 2005, Engaged.

Marriage Notes for ELIZABETH SACKETT and MIKE SCHUST:
Liz is very happy. She met a wonderful man, Mike Schust, at work. They have just become engaged. They plan to be married on Friday, July 8, 2005 on the island of St. Lucia, in the Carribean. There will be a reception in Michigan on Saturday, July 23, 2005. We are all looking forward to the wedding.

112. iii. ELLEN MAE SACKETT, b. Mar 23, 1978.
iv. ERROL JOSEPH SACKETT, b. Aug 15, 1980, St Joesph's Hospital, Ann Arbor, MI; m. CHRISTY MAY BELLS, May 22, 2004, Lansing, MI; b. Dec 24, 1983, Ft. Worth, TX.

More About ERROL JOSEPH SACKETT:
Notes (Facts Pg): Dec 07, 2004, Mi

79. COLLEEN ELIZABETH⁷ CRAIG (*SAMUEL WARD⁶, MARTIN BURTON⁵, MADISON STONER⁴, JAMES ALEXANDER³, GEORGE WASHINGTON², JOHN¹, WILLIAM^A, WILLIAM^B*) was born Nov 14, 1955. She married DAVID WILLIAM THURSTON Apr 27, 1985. He was born Dec 04, 1959.

Children of COLLEEN CRAIG and DAVID THURSTON are:

i. JENNIFER LYNN⁸ THURSTON, b. Dec 02, 1987.
ii. DANIEL CRAIG THURSTON, b. Nov 06, 1990.

80. GARY LYNN⁷ REDINGER (*FLORENCE RUTH⁶ CRAIG, MARTIN BURTON⁵, MADISON STONER⁴, JAMES ALEXANDER³, GEORGE WASHINGTON², JOHN¹, WILLIAM^A, WILLIAM^B*) was born May 09, 1951.

Children of GARY LYNN REDINGER are:

- 113. i. CRAIG BURTON⁸ REDINGER, b. Jul 08, 1971.
 - ii. JULIE ANNE REDINGER, b. Jan 09, 1973; m. JOHN MARK FONVIELLE, Jun 17, 2000; b. Jul 09, 1973.
 - iii. ANGELA KAY REDINGER, b. Mar 13, 1975.
- 114. iv. JENNIFER LYNN REDINGER, b. May 14, 1977.
 - v. CAROL DIANNE REDINGER, b. Dec 16, 1979; m. DAVID ANDREW MACBLANE, Sep 09, 2000; b. Mar 22, 1971.
 - vi. GLORIA JEAN REDINGER, b. Aug 19, 1982.
 - vii. KURT MICHAEL REDINGER, b. Sep 20, 1987; d. Aug 20, 1994, Taylorsville, NC.

More About KURT MICHAEL REDINGER:

Burial: Taylorsville City Cemetery, Taylorsville, NC

81. DARLINE FRANCES⁷ BOGUS (*FLORENCE RUTH⁶ CRAIG, MARTIN BURTON⁵, MADISON STONER⁴, JAMES ALEXANDER³, GEORGE WASHINGTON², JOHN¹, WILLIAM⁰, WILLIAM⁰*) was born Jul 10, 1953. She married (2) RAYMOND PALMER 1975, son of DARLINE FRANCES BOGUS.

Child of DARLINE FRANCES BOGUS is:

- i. RAYMOND⁸ PALMER, m. DARLINE FRANCES BOGUS, 1975; b. Jul 10, 1953.

82. BETTE LUCILLE⁷ SHEARER (*LILLIAN ADELAIDE⁶ HOLSTEIN, BEATRICE IDELLE⁵ CRAIG, MADISON STONER⁴, JAMES ALEXANDER³, GEORGE WASHINGTON², JOHN¹, WILLIAM⁰, WILLIAM⁰*) was born Feb 15, 1930. She married (2) ANTHONY N LINDENBERGER, son of BETTE LUCILLE SHEARER. She married (3) WILLIAM N JIULIANTE Jun 14, 1964. He was born May 29, 1929.

Children of BETTE LUCILLE SHEARER are:

- 115. i. ANTHONY N⁸ LINDENBERGER.
- 116. ii. KATHLENE ALICE LINDINBERGER, b. May 16, 1956.

Children of BETTE SHEARER and ANTHONY LINDENBERGER are:

- 117. iii. JOSEPH THOMAS⁸ LINDENBERGER, b. Sep 04, 1957.
- 118. iv. KAREN MARIE LINDENBERGER, b. Sep 18, 1961.
- 119. v. CYNTHEA SUE LINDENBERGER.

Child of BETTE SHEARER and WILLIAM JIULIANTE is:

- 120. vi. DAVID SAMUEL⁸ JIULIANTE, b. Nov 06, 1965.

83. ROBERT LELAND⁷ SHEARER (*LILLIAN ADELAIDE⁶ HOLSTEIN, BEATRICE IDELLE⁵ CRAIG, MADISON STONER⁴, JAMES ALEXANDER³, GEORGE WASHINGTON², JOHN¹, WILLIAM⁰, WILLIAM⁰*) was born May 30, 1932. He married HELEN ANN DUFFY Oct 23, 1954. She was born Apr 23, 1931, and died Nov 22, 1995 in Erie, PA.

More About HELEN ANN DUFFY:

Burial: West Lake Cemetery, Erie,
PA

Children of ROBERT SHEARER and HELEN DUFFY are:

- 121. i. HOLLY RUE⁸ SHEARER, b. Nov 27, 1955.
- 122. ii. ROBERT LELAND SHEARER, JR., b. Mar 27, 1957.
- 123. iii. THOMAS RAUL SHEARER, b. Jul 07, 1959.
- 124. iv. TRACY ANN SHEARER, b. Jul 17, 1960.

84. PATRICIA LARUE⁷ SHEARER (*LILLIAN ADELAIDE⁶ HOLSTEIN, BEATRICE IDELLE⁵ CRAIG, MADISON STONER⁴, JAMES ALEXANDER³, GEORGE WASHINGTON², JOHN¹, WILLIAM^A, WILLIAM^B*) was born Aug 14, 1937. She married RICHARD JOHN HELLMAN Apr 23, 1955. He was born Aug 30, 1932 in Valparaiso, IN.

Children of PATRICIA SHEARER and RICHARD HELLMAN are:

125. i. BRENDA ELIZABETH⁸ HELLMAN, b. May 22, 1955.
ii. SAMUEL LEHI HELLMAN, b. Oct 08, 1959, Erie, Pennsylvania; d. Oct 09, 1959, Erie, Pennsylvania.

More About SAMUEL LEHI HELLMAN:

Burial: Abt. Oct 09, 1959, Erie, PA

- iii. MARY KATHERINE HELLMAN, b. Jan 25, 1961, Erie, Pennsylvania; d. Jan 26, 1961, Erie, Pennsylvania.
126. iv. ERIC JOSEPH HELLMAN, b. Nov 13, 1962.
v. GARY STEPHEN HELLMAN, b. Oct 13, 1964.
127. vi. BRIGETTE MARIE HELLMAN, b. May 24, 1968.
vii. DAVID JOHN HELLMAN, b. Nov 08, 1969.
128. viii. REBECCA ANN HELLMAN, b. Apr 07, 1973.
ix. AMOS JOHN HELLMAN, b. Aug 25, 1976.
x. LEO THOMAS HELLMAN, b. Oct 27, 1957, Erie, Pennsylvania; d. Oct 27, 1957, Erie, Pennsylvania.

More About LEO THOMAS HELLMAN:

Burial: Cavertly Cemetery, Valparaiso, IN

- xi. RICHARD JOHN HELLMAN, b. May 11, 1956; d. May 13, 1956, Erie, PA; Stepchild.

More About RICHARD JOHN

HELLMAN: Burial: Abt. May 15, 1956,

Erie, PA

85. BRADLY LAINE⁷ CRAIG (*MAX THEODORE⁶, WILLIAM JOHN⁵, MADISON STONER⁴, JAMES ALEXANDER³, GEORGE WASHINGTON², JOHN¹, WILLIAM^A, WILLIAM^B*) was born Jun 17, 1955. He married LISA ANN HILTY Apr 28, 1979. She was born Oct 01, 1958.

Children of BRADLY CRAIG and LISA HILTY are:

- i. RYAN MATTHEW⁸ CRAIG, b. May 31, 1982.
ii. MEGHAN BETH CRAIG, b. Jun 03, 1986.
iii. ERICA LAINE CRAIG, b. Jun 17, 1989.

86. RANDY MAX⁷ CRAIG (*MAX THEODORE⁶, WILLIAM JOHN⁵, MADISON STONER⁴, JAMES ALEXANDER³, GEORGE WASHINGTON², JOHN¹, WILLIAM^A, WILLIAM^B*) was born Jul 09, 1957. He married JANET ELAINE HALL Sep 07, 1985. She was born Aug 24, 1960.

Children of RANDY CRAIG and JANET HALL are:

- i. ERIN NICHOLE⁸ CRAIG, b. Apr 23, 1987.
ii. SCOTT ALLEN CRAIG, b. Jul 24, 1989.

87. DOUGLAS CHRIS⁷ CRAIG (*MAX THEODORE⁶, WILLIAM JOHN⁵, MADISON STONER⁴, JAMES ALEXANDER³, GEORGE WASHINGTON², JOHN¹, WILLIAM^A, WILLIAM^B*) was born Mar 10, 1963. He married CAROL ANN BASH Oct 11, 1997. She was born Jun 17, 1963 in PA.

Children of DOUGLAS CRAIG and CAROL BASH are:

- i. JOSEPH DENIS⁸ CRAIG, b. Dec 04, 1982.
ii. PETER LEE CRAIG, b. May 22, 1986.

Generation No. 8

88. NANCY LOUISE⁸ MENTCH (*THELMA LOUISE⁷ CAMPBELL, FLORENCE ANITA⁶ CRAIG, FRANK CARROLL⁵, JOHN RAMSEY⁴, SAMUEL HENRY HARRISON³, GEORGE WASHINGTON², JOHN¹, WILLIAM^A, WILLIAM^B*) was born Jan 31, 1952 in Indiana Co., Indiana PA. She married LAWRENCE MICHAEL PHILLIPS, son of FRED PHILLIPS and MARCELLA TURNITIS. He was born Dec 03, 1948 in Detroit, Michigan.

Children of NANCY MENTCH and LAWRENCE PHILLIPS are:

- i. MELLA DANIELLE⁹ PHILLIPS, b. Jun 20, 1981.
- ii. MEGAN CHERE PHILLIPS, b. Sep 15, 1986.

89. JAMES PAUL⁸ MENTCH (*THELMA LOUISE⁷ CAMPBELL, FLORENCE ANITA⁶ CRAIG, FRANK CARROLL⁵, JOHN RAMSEY⁴, SAMUEL HENRY HARRISON³, GEORGE WASHINGTON², JOHN¹, WILLIAM^A, WILLIAM^B*) was born Jan 23, 1953 in Indiana Co., Indiana PA. He married ROBERTA LEE FABIN Oct 21, 1978 in Indiana County, PA, daughter of ROBERT FABIN and MILDRED OLSON. She was born Jul 31, 1953 in Indiana Co., Indiana PA.

More About JAMES PAUL MENTCH:

Education: Indiana University of Pennsylvania

Children of JAMES MENTCH and ROBERTA FABIN are:

- i. JILL NICOLE⁹ MENTCH, b. Dec 11, 1981, Indiana Co., Indiana PA.
- ii. MICHAEL PAUL MENTCH, b. Apr 13, 1986, Indiana Co., Indiana PA.

90. JAMES⁸ HAWK (*MARTHA IRENE⁷ CAMPBELL, FLORENCE ANITA⁶ CRAIG, FRANK CARROLL⁵, JOHN RAMSEY⁴, SAMUEL HENRY HARRISON³, GEORGE WASHINGTON², JOHN¹, WILLIAM^A, WILLIAM^B*) was born Dec 05, 1953 in Indiana Co., Indiana PA. He married KATHY MARIE GILLO Jun 12, 1976 in Heilwood, Indiana Co., PA. She was born Oct 17, 1954 in Spangler Hospital, Spangler, PA.

Children of JAMES HAWK and KATHY GILLO are:

- i. STEPHANIE NICHOLE⁹ HAWK, b. Aug 02, 1982.
- ii. CHAD JAMES HAWK, b. Jun 07, 1987.

91. RUSSELL⁸ HAWK (*MARTHA IRENE⁷ CAMPBELL, FLORENCE ANITA⁶ CRAIG, FRANK CARROLL⁵, JOHN RAMSEY⁴, SAMUEL HENRY HARRISON³, GEORGE WASHINGTON², JOHN¹, WILLIAM^A, WILLIAM^B*) He married MARTHA IRENE CAMPBELL, daughter of PAUL CAMPBELL and FLORENCE CRAIG. She was born Jun 08, 1930.

Child is listed above under (58) Martha Irene Campbell.

92. MARK STEPHEN⁸ BARCLAY (*RICHARD EDWIN⁷, EDNA MARIE⁶ CRAIG, MARTIN BURTON⁵, MADISON STONER⁴, JAMES ALEXANDER³, GEORGE WASHINGTON², JOHN¹, WILLIAM^A, WILLIAM^B*) was born Oct 09, 1957 in Hermine, PA. He married JO ANNE HARVEY Apr 23, 1983. She was born Apr 05, 1959 in Hermine, PA.

Children of MARK BARCLAY and Jo HARVEY are:

- i. MITCHELL DAVIS⁹ BARCLAY, b. Dec 31, 1990, Hermine, PA.
- ii. BRIDGETTE RENEE BARCLAY, b. Apr 20, 1994, Hermine, PA.

93. PAMELA SUE⁸ BARCLAY (*RICHARD EDWIN⁷, EDNA MARIE⁶ CRAIG, MARTIN BURTON⁵, MADISON STONER⁴, JAMES ALEXANDER³, GEORGE WASHINGTON², JOHN¹, WILLIAM^A, WILLIAM^B*) was born Apr 21, 1960. She married NELSON MONROE JOHNSON Oct 29, 1988. He was born Jan 22, 1961 in Fairfax, VA.

Children of PAMELA BARCLAY and NELSON JOHNSON are:

- i. REBECCA JANE⁹ JOHNSON, b. Jan 18, 1991, Fairfax, VA.
- ii. NATALIE ANN JOHNSON, b. Apr 05, 1993, Fairfax, VA.
- iii. STEPHEN NELSON JOHNSON, b. May 23, 1998, VA.

94. DOUGLAS SCOTT⁸ BARCLAY (*RICHARD EDWIN⁷, EDNA MARIE⁶ CRAIG, MARTIN BURTON⁵, MADISON STONER⁴, JAMES ALEXANDER³, GEORGE WASHINGTON², JOHN¹, WILLIAM^a, WILLIAM^b*) was born May 03, 1962 in Aiken, SC. He married SHIRLEEN ELIZABETH HANNON Jun 23, 1990. She was born Sep 27, 1960 in Aiken, SC.

Children of DOUGLAS BARCLAY and SHIRLEEN HANNON are:

- i. MATTHEW SCOTT⁹ BARCLAY, b. Jan 27, 1993, Aiken, SC.
- ii. LAUREN ELIZABETH BARCLAY, b. Sep 07, 1995, Aiken, SC.

95. JEFFREY KENNETH⁸ CRAIG (*ROBERT BLAIR⁷, ROBERT LEROY⁶, MARTIN BURTON⁵, MADISON STONER⁴, JAMES ALEXANDER³, GEORGE WASHINGTON², JOHN¹, WILLIAM^a, WILLIAM^b*) was born Jul 18, 1960 in Indiana Hospital, White Twp., Indiana Co., Indiana, PA. He married (1) PAMELA SUE BAKER Jun 01, 1985, daughter of EDWARD BAKER and NANCY KIETH. She was born Feb 07, 1965 in Marion Center, PA. He married (2) BARBARA JEAN FOLEY May 22, 2004 in OMNI, Newport News, VA. She was born Apr 30, 1965 in NY.

More About JEFFREY KENNETH CRAIG:

Notes (Facts Pg): May 22, 2004, Jeff & Barbara's Wedding

More About PAMELA SUE BAKER:

Divorced: Newport News, VA

Notes (Facts Pg): Dec 27, 2003, Moving to Californina

Children of JEFFREY CRAIG and PAMELA BAKER are:

- i. CASEY ANN⁹ CRAIG, b. Jan 30, 1988, Newport News, VA.

More About CASEY ANN CRAIG: Notes

(Facts Pg): Apr 11, 2002, Honors

- ii. JEFFREY KYLE CRAIG, b. Oct 11, 1989, Newport News, VA.

96. ROGER TRENT⁸ CRAIG (*ROBERT BLAIR⁷, ROBERT LEROY⁶, MARTIN BURTON⁵, MADISON STONER⁴, JAMES ALEXANDER³, GEORGE WASHINGTON², JOHN¹, WILLIAM^a, WILLIAM^b*) was born Nov 20, 1962 in Indiana Hospital, White Twp, Indiana Co., Indiana, PA. He married (1) CHRIS MOOREHEAD. She was born in Loveland, Colorado. He married (2) CHRISTAL 'KRIS' MARIE HAYES Feb 14, 1989 in Gloster, Virginia, daughter of KENNETH HAYES and CHARLOTTE N. She was born Jul 16, 1963 in Newport News, VA. He married (3) SHANA HENRY Aug 2004 in Newport News, VA. She was born Nov 01, 1968 in NPN, VA.

More About ROGER TRENT CRAIG:

Notes (Facts Pg): Jun 25, 2002, Letter from POP

More About CHRISTAL 'KRIS' MARIE HAYES:

Divorced: Nov 19, 2004, Filed for Divorce

Child of ROGER CRAIG and CHRISTAL HAYES is:

129. i. RYAN KEITH⁹ CRAIG, b. Jun 29, 1989, Newport News, VA.

97. KENNA MARIE⁸ CRAIG (*KENNETH MERLE⁷, ROBERT LEROY⁶, MARTIN BURTON⁵, MADISON STONER⁴, JAMES ALEXANDER³, GEORGE WASHINGTON², JOHN¹, WILLIAM^a, WILLIAM^b*) was born Jan 23, 1963 in Indiana, PA. She married KEVIN SCOTT SMYERS Dec 28, 1990 in Mairon Center, PA. He was born Feb 26, 1962 in PA.

More About KENNA MARIE CRAIG:

Web Page: Nov 29, 2001, Notes

Children of KENNA CRAIG and KEVIN SMYERS are:

- i. CHAD ELLIOT⁹ SMYERS, b. Oct 19, 1992, PA.
- ii. ADAM MARTIN SMYERS, b. Dec 17, 1993, PA.

98. BEVERLY DIANE⁸ CRAIG (*KENNETH MERLE⁷, ROBERT LEROY⁶, MARTIN BURTON⁵, MADISON STONER⁴, JAMES ALEXANDER³, GEORGE WASHINGTON², JOHN¹, WILLIAM^a, WILLIAM^b*) was born May 19, 1964 in Indiana, PA. She married EDWARD CHRIS BAKER Aug 11, 1984. He was born Oct 01, 1961 in PA.

Children of BEVERLY CRAIG and EDWARD BAKER are:

- i. BREEANNE MARIE⁹ BAKER, b. Nov 28, 1988, PA.
- ii. CRAIG CHRISTOPHER BAKER, b. Sep 08, 1990, PA.

99. DAVID EARL⁸ CRAIG (*ARTHUR GERALD⁷, MADISON ARTHUR⁶, MARTIN BURTON⁵, MADISON STONER⁴, JAMES ALEXANDER³, GEORGE WASHINGTON², JOHN¹, WILLIAM^a, WILLIAM^b*) was born Feb 26, 1961 in PA. He married RITA EILEEN KING Apr 12, 1980. She was born Feb 20, 1961.

More About RITA EILEEN KING:

Web Page: Jun 12, 2004, James

Children of DAVID CRAIG and RITA KING are:

- i. JENNIFER LARA⁹ CRAIG, b. Oct 13, 1980.

More About JENNIFER LARA CRAIG:

Web Page: Oct 02, 2001, Email

- ii. MICHAEL DAVID CRAIG, b. Aug 13, 1984.

c. SANDRA KAY⁸ CRAIG (*ARTHUR GERALD⁷, MADISON ARTHUR⁶, MARTIN BURTON⁵, MADISON STONER⁴, JAMES ALEXANDER³, GEORGE WASHINGTON², JOHN¹, WILLIAM^a, WILLIAM^b*) was born May 04, 1962. She married RANDY EARL BLOSE May 21, 1983. He was born Aug 03, 1961.

Children of SANDRA CRAIG and RANDY BLOSE are:

- i. BRENT MICHAEL⁹ BLOSE, b. Aug 18, 1986.
- ii. SAMANTHA PAIGE BLOSE, b. Jun 30, 1992.

101. BARRY JAMES⁸ CRAIG (*JAMES CARLYLE⁷, MADISON ARTHUR⁶, MARTIN BURTON⁵, MADISON STONER⁴, JAMES ALEXANDER³, GEORGE WASHINGTON², JOHN¹, WILLIAM^a, WILLIAM^b*) was born Mar 25, 1963. He married LEIGH ANN SNEDDEN Jul 02, 1988. She was born Oct 05, 1963.

Children of BARRY CRAIG and LEIGH SNEDDEN are:

- i. ASHLEIGH NICOLE⁹ CRAIG, b. Oct 20, 1991.
- ii. LAUREN RENEE CRAIG, b. Jul 13, 1994.

102. ERIC SCOTT⁸ CRAIG (*JAMES CARLYLE⁷, MADISON ARTHUR⁶, MARTIN BURTON⁵, MADISON STONER⁴, JAMES ALEXANDER³, GEORGE*

WASHINGTON², JOHN¹, WILLIAM⁴, WILLIAM⁵) was born Apr 11, 1966. He married MARIA DEE METIL Jun 29, 1991. She was born Nov 14, 1965.

Children of ERIC CRAIG and MARIA METIL are:

- i. JACOB MICHAEL⁹ CRAIG, b. Aug 19, 1994.
- ii. ERICA JEAN CRAIG, b. May 09, 1996.
- iii. MARK JAMES CRAIG, b. Nov 14, 1998, PA.

103. RONALD JOSEPH⁸ ADAMSON (*GLADYS KATHRIN⁷ CRAIG, MADISON ARTHUR⁶, MARTIN BURTON⁵, MADISON STONER⁴, JAMES ALEXANDER³, GEORGE WASHINGTON², JOHN¹, WILLIAM⁴, WILLIAM⁵*) was born Feb 18, 1965. He married (1) GLADYS KATHRIN CRAIG, daughter of MADISON CRAIG and ANNA MILLEN. She was born Jul 01, 1943. He married (2) RITA YVONNE MARTIN Sep 14, 1996. She was born May 30, 1964.

Child is listed above under (64) Gladys Kathrin Craig.

Child of RONALD ADAMSON and RITA MARTIN is:

- i. JEREMY DALE⁹ ADAMSON, b. Dec 15, 1999, PA.

104. BRYON PAUL⁸ BISHOP, SR. (*CAROL JEAN⁷ CRAIG, PAUL CLIFFORD⁶, MARTIN BURTON⁵, MADISON STONER⁴, JAMES ALEXANDER³, GEORGE WASHINGTON², JOHN¹, WILLIAM⁴, WILLIAM⁵*) was born Dec 31, 1966 in PA. He married LISA ANN KINTER Aug 20, 1988. She was born Jan 23, 1968 in PA.

Children of BRYON BISHOP and LISA KINTER are:

- i. KARYSSA ANN⁹ BISHOP, b. Dec 28, 1989, PA.
- ii. BRYON PAUL BISHOP, JR., b. Aug 24, 1992, PA.
- iii. MALLORY PAIGE BISHOP, b. Apr 30, 1997.

105. TODD MARTIN⁸ CRAIG (*CLIFFORD DEAN⁷, PAUL CLIFFORD⁶, MARTIN BURTON⁵, MADISON STONER⁴, JAMES ALEXANDER³, GEORGE WASHINGTON², JOHN¹, WILLIAM⁴, WILLIAM⁵*) was born Jun 06, 1964. He married BRENDA LOUISE KLASSEN Apr 24, 1993. She was born Oct 07, 1961.

Child of TODD CRAIG and BRENDA KLASSEN is:

- i. KATHERINE ELIZABETH⁹ CRAIG, b. Jul 16, 1996.

106. ROBIN SUE⁸ CRAIG (*CLIFFORD DEAN⁷, PAUL CLIFFORD⁶, MARTIN BURTON⁵, MADISON STONER⁴, JAMES ALEXANDER³, GEORGE WASHINGTON², JOHN¹, WILLIAM⁴, WILLIAM⁵*) was born Jul 31, 1965. She married STEVEN PAUL SMITH Nov 07, 1992. He was born Mar 20, 1963.

More About ROBIN SUE CRAIG:

Web Page: Nov 16, 2001

Children of ROBIN CRAIG and STEVEN SMITH are:

- i. MEGAN ELIZABETH⁹ SMITH, b. Apr 07, 1995.
- ii. MORGAN NICOLE SMITH, b. Jan 21, 1998, PA.

107. JULIE ELIZABETH⁸ CRAIG (*CLIFFORD DEAN⁷, PAUL CLIFFORD⁶, MARTIN BURTON⁵, MADISON STONER⁴, JAMES ALEXANDER³, GEORGE WASHINGTON², JOHN¹, WILLIAM⁴, WILLIAM⁵*) was born Mar 12, 1972. She married ANDREW CHRISTOPHER DEMAREE May 21, 1994. He was born Sep 18, 1972.

More About JULIE ELIZABETH CRAIG:

Web Page: Jul 10, 2004, Juliedemaree@yahoo.com

Children of JULIE CRAIG and ANDREW DEMAREE are:

- i. EVAN MICHAEL⁹ DEMAREE, b. Jul 30, 1999.
- ii. TANNER ANDREW DEMAREE, b. Jun 10, 2001, NY.
- iii. MARIN ELIZABETH DEMAREE, b. Jun 18, 2004.

More About MARIN ELIZABETH DEMAREE:

Web Page: Aug 10, 2004, Juliedemaree@yahoo.com

108. MICHELLE LEE⁸ CRAIG (*MARTIN LEROY⁷, DELMAR PRESTON⁶, MARTIN BURTON⁵, MADISON STONER⁴, JAMES ALEXANDER³, GEORGE WASHINGTON², JOHN¹, WILLIAM⁰, WILLIAM⁰*) was born Sep 30, 1972. She married (2) MARK ERIC CAMPBELL Jan 29, 1998. He was born Nov 12, 1961 in PA.

Child of MICHELLE LEE CRAIG is:

- i. ASHLEE MARIE⁹ PORTERFIELD, b. Jul 09, 1992.

Children of MICHELLE CRAIG and MARK CAMPBELL are:

- ii. TABETHA⁹ CAMPBELL.
- iii. ALICIA CAMPBELL.
- iv. MARK ERIC CAMPBELL, JR.
- v. CORY MARTIN CAMPBELL, b. Nov 18, 1999, PA.

109. DANIEL LEE⁸ BLAIR (*SHELBY JEAN⁷ CRAIG, WILLIAM TYRUS⁶, MARTIN BURTON⁵, MADISON STONER⁴, JAMES ALEXANDER³, GEORGE WASHINGTON², JOHN¹, WILLIAM⁰, WILLIAM⁰*) was born May 14, 1961. He married (1) CHRISTINE ELAINE BLAIR, daughter of DANIEL BLAIR and KAREN FOX. He married (2) KAREN LOUISE FOX Aug 25, 1984. She was born Jun 16, 1963.

Child of DANIEL BLAIR and CHRISTINE BLAIR is:

- i. RAYMOND JAMES⁹ BLAIR, JR., m. (1) KATHIE N WILSON, Aug 18, 1987; m. (2) KELLY MILLER, Jun 01, 1993; b. May 03, 1962.

Children of DANIEL BLAIR and KAREN FOX are:

130. ii. CHRISTINE ELAINE⁹ BLAIR.
- iii. SARAH ELIZABETH BLAIR, b. Aug 25, 1989.

110. HEATHER LYNN⁸ RHEA (*EDWARD CLAIR⁷, CATHERINE HAZEL B⁶ CRAIG, MARTIN BURTON⁵, MADISON STONER⁴, JAMES ALEXANDER³, GEORGE WASHINGTON², JOHN¹, WILLIAM⁰, WILLIAM⁰*) was born Jun 26, 1969. She married WILLIAM MICHAEL BEZEK May 23, 1992. He was born Mar 26, 1969 in Manassas, VA.

More About HEATHER LYNN RHEA:

Web Page: Oct 19, 2001, Email

Children of HEATHER RHEA and WILLIAM BEZEK are:

- i. TYLER EDWARD⁹ BEZEK, b. Oct 12, 1994, Manassas, VA.
- ii. ZACKERY MICHAEL BEZEK, b. Jun 26, 1997, Manassas, VA.

111. SHAWN PATRICK⁸ PALMER (*MARGARET PATRICIA⁷ RHEA, CATHERINE HAZEL B⁶ CRAIG, MARTIN BURTON⁵, MADISON STONER⁴, JAMES ALEXANDER³, GEORGE WASHINGTON², JOHN¹, WILLIAM⁰, WILLIAM⁰*) was born Jan 07, 1975 in Punxsutawney, PA. He married

VICKI LYNN DINGER Jun 13, 1998. She was born Dec 09, 1977.

Children of SHAWN PALMER and VICKI DINGER are:

- i. CALVIN ZANE⁹ PALMER, b. Apr 25, 1998, PA.
- ii. CLAYTON BLANE PALMER, b. Jul 07, 1999, PA.

112. ELLEN MAE⁸ SACKETT (*CAROLYN ANN⁷ CRAIG, SAMUEL WARD⁶, MARTIN BURTON⁵, MADISON STONER⁴, JAMES ALEXANDER³, GEORGE WASHINGTON², JOHN¹, WILLIAM^A, WILLIAM^B*) was born Mar 23, 1978. She married MATTHEW MICHAEL FURTNEY Jul 10, 1999. He was born Mar 03, 1976.

More About ELLEN MAE SACKETT:

Notes (Facts Pg): Dec 07, 2004, Mi

Children of ELLEN SACKETT and MATTHEW FURTNEY are:

- i. MICHAEL WARD⁹ FURTNEY, b. Aug 11, 2000, MI.

More About MICHAEL WARD FURTNEY: Notes
(Facts Pg): Dec 28, 2002, Christmas News

- ii. EVAN MATTHEW FURTNEY, b. Nov 14, 2002, 8:23PM ~ 9# 4oz, 22" long.

113. CRAIG BURTON⁸ REDINGER (*GARY LYNN⁷, FLORENCE RUTH⁶ CRAIG, MARTIN BURTON⁵, MADISON STONER⁴, JAMES ALEXANDER³, GEORGE WASHINGTON², JOHN¹, WILLIAM^A, WILLIAM^B*) was born Jul 08, 1971. He married JULIANNE BROWN Aug 12, 1995. She was born Jul 31, 1975.

Children of CRAIG REDINGER and JULIANNE BROWN are:

- i. TANNER CRAIG⁹ REDINGER, b. Aug 12, 1998.
- ii. PEYTON REED REDINGER, b. Jul 23, 2001, VA.

114. JENNIFER LYNN⁸ REDINGER (*GARY LYNN⁷, FLORENCE RUTH⁶ CRAIG, MARTIN BURTON⁵, MADISON STONER⁴, JAMES ALEXANDER³, GEORGE WASHINGTON², JOHN¹, WILLIAM^A, WILLIAM^B*) was born May 14, 1977. She married CLIFFORD RAY 'CLIF' BURTON Jun 26, 1999. He was born Feb 02, 1976.

More About JENNIFER LYNN REDINGER:

Web Page: Sep 30, 2001, Email

Child of JENNIFER REDINGER and CLIFFORD BURTON is:

- i. ISABELLA GRACE⁹ BURTON, b. Oct 28, 2000, NC.

115. ANTHONY N⁸ LINDENBERGER (*BETTE LUCILLE⁷ SHEARER, LILLIAN ADELAIDE⁶ HOLSTEIN, BEATRICE IDELLE⁵ CRAIG, MADISON STONER⁴, JAMES ALEXANDER³, GEORGE WASHINGTON², JOHN¹, WILLIAM^A, WILLIAM^B*) He married (1) BETTE LUCILLE SHEARER, daughter of THOMAS SHEARER and LILLIAN HOLSTEIN. She was born Feb 15, 1930. He married (3) KATHLENE ALICE LINDENBERGER, daughter of BETTE LUCILLE SHEARER. She was born May 16, 1956.

Children are listed above under (82) Bette Lucille Shearer.

Child of ANTHONY N LINDENBERGER is:

- i. BEVERLY DIANNE⁹ LINDENBERGER, b. Jan 16, 1951; m. THOMAS N SMITH; b. Aug 01, 1923.

116. KATHLENE ALICE⁸ LINDENBERGER (*BETTE LUCILLE⁷ SHEARER, LILLIAN ADELAIDE⁶ HOLSTEIN, BEATRICE IDELLE⁵ CRAIG,*

MADISON STONER⁴, JAMES ALEXANDER³, GEORGE WASHINGTON², JOHN¹, WILLIAM^A, WILLIAM^B) was born May 16, 1956. She married (1) ANTHONY N LINDENBERGER, son of BETTE LUCILLE SHEARER. She married (2) HOWARD MARKHAM Aug 19, 1972.

Child of KATHLENE LINDINBERGER and HOWARD MARKHAM is:

131. i. JENIFER TERESSA⁹ MARKHAM, b. Mar 27, 1973.

117. JOSEPH THOMAS⁸ LINDENBERGER (ANTHONY^N⁸, BETTE LUCILLE⁷ SHEARER, LILLIAN ADELAIDE⁶ HOLSTEIN, BEATRICE IDELLE⁵ CRAIG, MADISON STONER⁴, JAMES ALEXANDER³, GEORGE WASHINGTON², JOHN¹, WILLIAM^A, WILLIAM^B) was born Sep 04, 1957. He married DEBBIE WARD May 12, 1984.

Children of JOSEPH LINDENBERGER and DEBBIE WARD are:

- i. LISA ANN⁹ LINDENBERGER, b. Jan 05, 1986.
- ii. KELSEY JO LINDENBERGER, b. Nov 23, 1991.

118. KAREN MARIE⁵ LINDENBERGER (ANTHONY^N⁸, BETTE LUCILLE⁷ SHEARER, LILLIAN ADELAIDE⁶ HOLSTEIN, BEATRICE IDELLE⁵ CRAIG, MADISON STONER⁴, JAMES ALEXANDER³, GEORGE WASHINGTON², JOHN¹, WILLIAM^A, WILLIAM^B) was born Sep 18, 1961. She married BRUCE BENNET Sep 08, 1984.

Children of KAREN LINDENBERGER and BRUCE BENNET are:

- i. SHARON ROSEMARY⁹ BENNET, b. Apr 04, 1988.
- ii. JOEL MICHAEL BENNET, b. Apr 23, 1991.

119. CYNTHIA SUE⁸ LINDENBERGER (ANTHONY^N⁸, BETTE LUCILLE⁷ SHEARER, LILLIAN ADELAIDE⁶ HOLSTEIN, BEATRICE IDELLE⁵ CRAIG, MADISON STONER⁴, JAMES ALEXANDER³, GEORGE WASHINGTON², JOHN¹, WILLIAM^A, WILLIAM^B) She married (1) MARK BERNARD PRESUTTI.

Child of CYNTHIA SUE LINDENBERGER is:

- i. RYAN MICHAEL⁹ LINDENBERGER, b. Nov 22, 1989.

120. DAVID SAMUEL⁸ JULIANTE (BETTE LUCILLE⁷ SHEARER, LILLIAN ADELAIDE⁶ HOLSTEIN, BEATRICE IDELLE⁵ CRAIG, MADISON STONER⁴, JAMES ALEXANDER³, GEORGE WASHINGTON², JOHN¹, WILLIAM^A, WILLIAM^B) was born Nov 06, 1965. He married DANET FEBLMAN Dec 13, 1998.

Children of DAVID JULIANTE and DANET FEBLMAN are:

- i. DIANNE RACHELLE⁹ JULIANTE, b. Jan 12, 1994.
- ii. DOMINIQUE DAVID JULIANTE, b. May 13, 1999, PA.

121. HOLLY RUE⁸ SHEARER (ROBERT LELAND⁷, LILLIAN ADELAIDE⁶ HOLSTEIN, BEATRICE IDELLE⁵ CRAIG, MADISON STONER⁴, JAMES ALEXANDER³, GEORGE WASHINGTON², JOHN¹, WILLIAM^A, WILLIAM^B) was born Nov 27, 1955. She married GARY THOMAS CIELAK

Sep 15, 1979.

Children of HOLLY SHEARER and GARY CIELAK are:

- i. APRIL MARIE⁹ CIELAK, b. Apr 05, 1981.
- ii. KELLY ANN CIELAK, b. May 08, 1983.
- iii. CRISTINE ROSE CIELAK, b. Apr 12, 1988.

122. ROBERT LELAND⁸ SHEARER, JR. (*ROBERT LELAND⁷, LILLIAN ADELAIDE⁶ HOLSTEIN, BEATRICE IDELLE⁵ CRAIG, MADISON STONER⁴, JAMES ALEXANDER³, GEORGE WASHINGTON², JOHN¹, WILLIAM^A, WILLIAM^B*) was born Mar 27, 1957. He married ELLEN MANDO May 05, 1986.

Children of ROBERT SHEARER and ELLEN MANDO are:

- i. ROBERT LELAND⁹ SHEARER III, b. Jun 01, 1989.
- ii. LINDIA ELLEN SHEARER, b. Aug 18, 1992.
- iii. ISABELLE LEE SHEARER, b. Jul 19, 1993.

123. THOMAS RAUL⁸ SHEARER (*ROBERT LELAND⁷, LILLIAN ADELAIDE⁶ HOLSTEIN, BEATRICE IDELLE⁵ CRAIG, MADISON STONER⁴, JAMES ALEXANDER³, GEORGE WASHINGTON², JOHN¹, WILLIAM^A, WILLIAM^B*) was born Jul 07, 1959. He married WENDINE LEE CONNICK Dec 22, 1983. She was born Jun 25, 1959.

Child of THOMAS SHEARER and WENDINE CONNICK is:

- i. THOMAS PAUL⁹SHEARER, JR, b. Oct 12, 1982.

124. TRACY ANN⁸ SHEARER (*ROBERT LELAND⁷, LILLIAN ADELAIDE⁶ HOLSTEIN, BEATRICE IDELLE⁵ CRAIG, MADISON STONER⁴, JAMES ALEXANDER³, GEORGE WASHINGTON², JOHN¹, WILLIAM^A, WILLIAM^B*) was born Jul 17, 1960. She married DAVID LEWIS TOMSKI Jan 10, 1986. He was born Jan 30, 1947.

Children of TRACY SHEARER and DAVID TOMSKI are:

- i. REGINA ANN⁹ TOMSKI, b. May 10, 1986.
- ii. SHELBY MARIE TOMSKI, b. Oct 26, 1991.

125. BRENDA ELIZABETH⁸ HELLMAN (*PATRICIA LARUE⁷ SHEARER, LILLIAN ADELAIDE⁶ HOLSTEIN, BEATRICE IDELLE⁵ CRAIG, MADISON STONER⁴, JAMES ALEXANDER³, GEORGE WASHINGTON², JOHN¹, WILLIAM^A, WILLIAM^B*) was born May 22, 1955. She married STEPHEN EARL LAUGHLIN May 22, 1976.

Children of BRENDA HELLMAN and STEPHEN LAUGHLIN are:

- i. SHANNON KELLY⁹ LAUGHLIN, b. May 30, 1993.
- ii. CHARLES ROBERT LAUGHLIN, b. Jan 09, 1995.

126. ERIC JOSEPH⁸ HELLMAN (*PATRICIA LARUE⁷ SHEARER, LILLIAN ADELAIDE⁶ HOLSTEIN, BEATRICE IDELLE⁵ CRAIG, MADISON STONER⁴, JAMES ALEXANDER³, GEORGE WASHINGTON², JOHN¹, WILLIAM^A, WILLIAM^B*) was born Nov 13, 1962. He married SANDRA MAE ??? Jun 09, 1989. She was born Jan 19, 1969.

Children of ERIC HELLMAN and SANDRA ??? are:

- i. BRADLEY JOSEPH⁹ HELLMAN, b. Jan 09, 1990.
- ii. ERICA LYNN HELLMAN, b. Jun 04, 1993.

127. BRIGETTE MARIE⁸ HELLMAN (*PATRICIA LARUE⁷ SHEARER, LILLIAN ADELAIDE⁶ HOLSTEIN, BEATRICE IDELLE⁵ CRAIG, MADISON STONER⁴, JAMES ALEXANDER³, GEORGE WASHINGTON², JOHN¹, WILLIAM^A, WILLIAM^B*) was born May 24, 1968. She married DAVID LEE CAVANAUGH Oct 19, 1991. He was born Jul 11, 1971.

Children of BRIGETTE HELLMAN and DAVID CAVANAUGH are:

- i. AARON MICHAEL⁹ HELLMAN, b. Mar 31, 1988.
- ii. KAYLA MARIE HELLMAN, b. Sep 21, 1989.
- iii. KATHERINE LYNN CAVANAUGH, b. Nov 23, 1991.

128. REBECCA ANN⁸ HELLMAN (*PATRICIA LARUE⁷ SHEARER, LILLIAN ADELAIDE⁶ HOLSTEIN, BEATRICE IDELLE⁵ CRAIG, MADISON STONER⁴, JAMES ALEXANDER³, GEORGE WASHINGTON², JOHN¹, WILLIAM^a, WILLIAM^b*) was born Apr 07, 1973. She married (1) DAVID DRUMOND. She married (2) KEVIN SCOTT DRUMMOND Nov 24, 1990. He was born Apr 25, 1969.

Children of REBECCA HELLMAN and KEVIN DRUMMOND are:

- i. VEGA JOE⁹ BLOSSOM.
- ii. RANDOLPH MAJOR SCOTT DRUMMOND, b. Sep 11, 1991.
- iii. KATERINA ELIZABETH DRUMMOND, b. Sep 13, 1994.

Generation No. 9

129. RYAN KEITH⁹ CRAIG (*ROGER TRENT⁸, ROBERT BLAIR⁷, ROBERT LEROY⁶, MARTIN BURTON⁵, MADISON STONER⁴, JAMES ALEXANDER³, GEORGE WASHINGTON², JOHN¹, WILLIAM^a, WILLIAM^b*) was born Jun 29, 1989 in Newport News, VA. He met AMBER RENEE BROWN 2005 in Newport News, VA, daughter of RANDY BROWN and KIMBERLY DANLEY. She was born Jun 16, 1989 in Gloster, VA.

Child of RYAN CRAIG and AMBER BROWN is:

- i. BRETT MICHEAL¹⁰ CRAIG, b. May 28, 2005, Newport News, VA.

130. CHRISTINE ELAINE⁹ BLAIR (*DANIEL LEE⁸, SHELBY JEAN⁷ CRAIG, WILLIAM TYRUS⁶, MARTIN BURTON⁵, MADISON STONER⁴, JAMES ALEXANDER³, GEORGE WASHINGTON², JOHN¹, WILLIAM^a, WILLIAM^b*) She married (1) DANIEL LEE BLAIR, son of RAYMOND BLAIR and SHELBY CRAIG. He was born May 14, 1961. She married (2) TIMOTHY EARL DAVIS Jun 18, 1981. He was born Jan 09, 1960. She married (3) TODD MORNINGSTAR Dec 31, 1987. He was born Mar 23, 1963. She married (4) RICHARD EARL WOODS Mar 21, 1993. He was born Aug 19, 1966.

Child is listed above under (109) Daniel Lee Blair.

Child of CHRISTINE BLAIR and TIMOTHY DAVIS is:

- i. KELLY LYNN¹⁰ DAVIS, b. Apr 30, 1983.

Child of CHRISTINE BLAIR and RICHARD WOODS is:

- ii. JAMIE RICHARD¹⁰ WOODS, b. Mar 30, 1993.

131. JENIFER TERESSA⁹ MARKHAM (*KATHLENE ALICE⁸ LINDINBERGER, BETTE LUCILLE⁷ SHEARER, LILLIAN ADELAIDE⁶ HOLSTEIN, BEATRICE IDELLE⁵ CRAIG, MADISON STONER⁴, JAMES ALEXANDER³, GEORGE WASHINGTON², JOHN¹, WILLIAM^a, WILLIAM^b*) was born Mar 27, 1973. She married (2) FRANK F TOOMEY, JR. Jan 22, 1994.

Child of JENIFER TERESSA MARKHAM is:

- i. N N¹⁰ MARKS.

Children of JENIFER MARKHAM and FRANK TOOMEY are:

- ii. AUITU¹⁰ TOOMEY, b. Jan 14, 1992.
- iii. AUTUMN LILLIAN TOOMEY, b. Jul 14, 1992.
- iv. MERIK GORDAN TOOMEY, b. Jul 17, 1994.